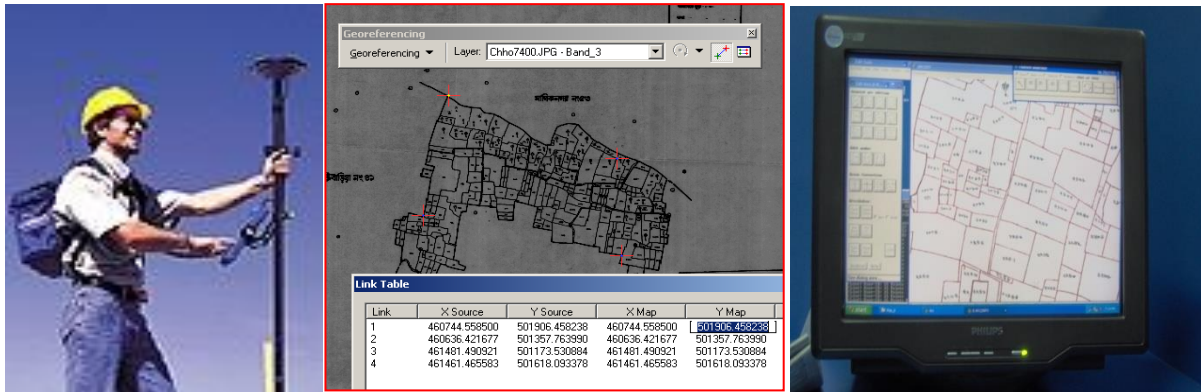


Urban Development Directorate (UDD)

Final Report

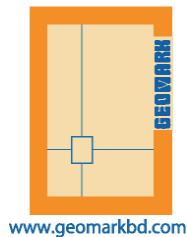
On

Supplying of Digitized Mouza Maps of MSDP (2011-2031) project area (Hard & Soft copy) with necessary Geo-referencing by RTK GPS based Ground Control Point (GCP) Project



September 10, 2014

Submitted by



GEOMARK

L I M I T E D.

House #23, Road#12, PC Culture Housing Society
Mohammadpur, Dhaka-1207.

Supplying of Digitized Mouza Maps of MSDP (2011-2031) project area (Hard & Soft copy) with necessary Geo-referencing by RTK GPS based Ground Control Point (GCP).

TABLE OF CONTENTS

Chapter 1: Background of the project	Page 1-3
Chapter 2: Understanding the Assignment	Page 4
Chapter 3: Methodology	Page 5-68
Chapter 4: Additional issues and Recommendation	Page 69-71
Chapter 5: Conclusion	Page 72
Annexure:	

CHAPTER 1

Project Background

1.1 Introduction

It is worthy to mention that UDD is one of the important govt. organizations engaged in Physical/Infrastructure/Land use planning in Bangladesh. But unfortunately, no data related to disaster reduction has been incorporated in these plans so far. CDMP has been involved in formulating different disaster oriented Risk and Vulnerability Maps and respective Response related Plans. The primary step of disaster vulnerability reduction can be achieved if these maps and data are incorporated in Land use/Infrastructure Planning.

1.2 Project

Project: Supplying of Digitized Mouza Maps of MSDP (2011-2031) project area (Hard & Soft copy) with necessary Geo-referencing by RTK GPS based Ground Control Point (GCP)

The project area is under Mymensingh District in Mymensingh sadar Upzila and part of Gouripur Upazilla, 10 union and 01 Pouroshava consist 116 mauza..

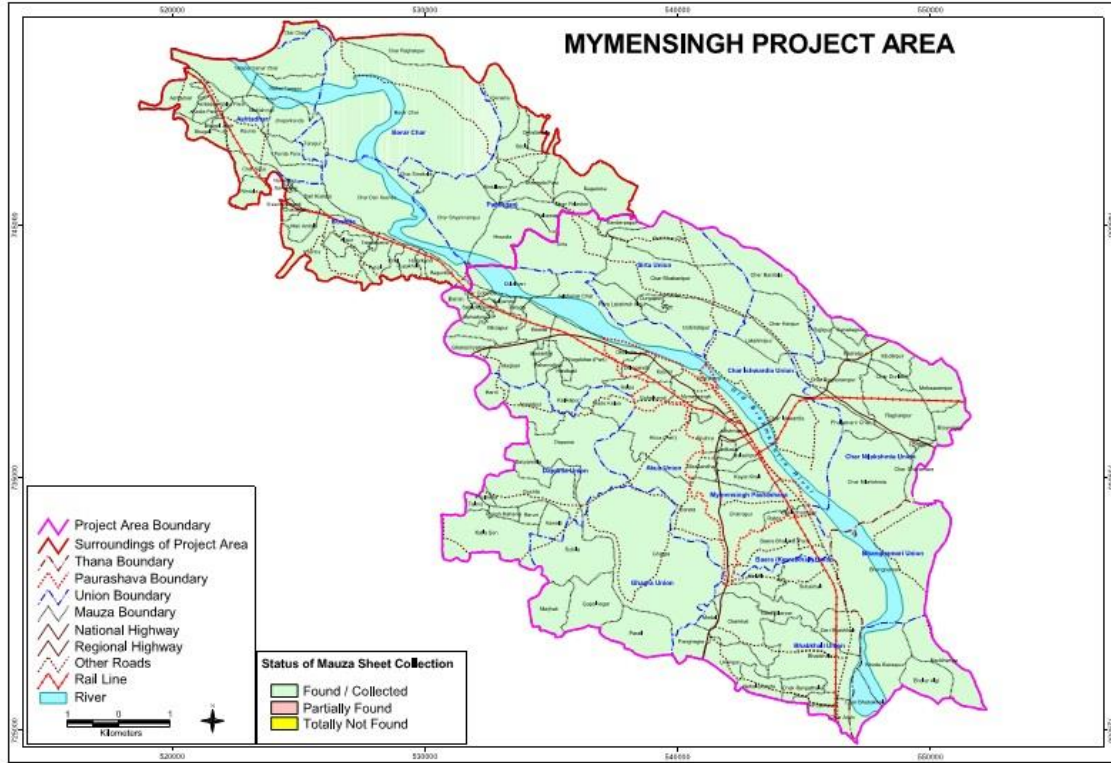


Figure: Study Area including 4 unions

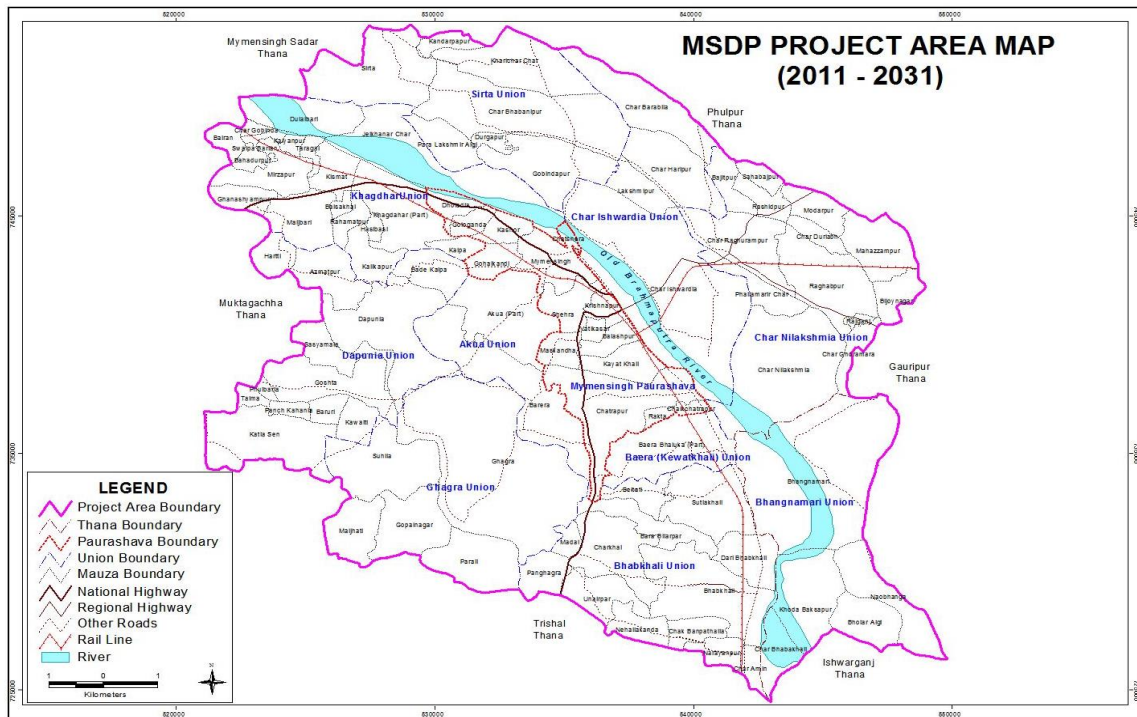


Figure 1: Project Area (10 Union)

1.3 Contract & Agreement

This agreement made the 29/01/2013 of between Director, Urban Development Directorate, Segunbagicha, Dhaka. of the one part and Managing Director, Geomark Ltd, House # 23(3rd Floor), Road # 12, PC culture Housing Society, Mohammadpur, Dhaka-1207.

Whereas the Procuring Entity invited Tenders of certain works, viz, Supplying of Digitized Mouza Maps of MSDP (2011-2031) project area (Hard & Soft copy) with necessary Geo-referencing by RTK GPS based Ground Control Point (GCP) and has accept a Tender by the Contractor for the execution of those works .

CHAPTER 2

Understanding the Assignment

2.1 The Assignment

The task for the Consultant

- ❖ Mouza Map collection from UDD
- ❖ Mouza scanning and digitizing
- ❖ Collection of Ground Control Point (GCP) through RTK GPS survey
- ❖ Geo-Referencing of Mouza Maps
- ❖ Map Printing
- ❖ Submission of database soft copy (DVD write) and printed hard copy- 3 set

2.2 Duration of work

All the scanning, Geo-referencing, Digitizing, and outputs shall be completed within 180 (One hundred eighty) days from the date of award of the contract.

2.3 Equipment, Material and Manpower

All the equipments, material, manpower and incidentals necessary for conducting all the works mentioned above shall be provided by the contractor. The contractor shells prepare a detailed worked schedule for the contract within detailed work scheduled.

CHAPTER 3

METHODOLOGY

3.1 Mouza Maps Scanning and Digitizing

3.1.1 Scanning of Mouza Map

Scanning of Mouza Maps will be carried out using dram scanner. Flat bed scanner will not be allowed for scanning of mouza maps. Rotation and alignment must be maintained during the scanning of mouza maps. After scanning of Mouza Maps all scanned files, in digital format, will be submitted to the Project Director (PD) for preservation.

3.1.2 Accuracy and DPI management during Scanning

During scanning the mouza maps at least 500 dpi resolutions and maximum error 2 mm. maintaining the appropriate resolution is mandatory. The scanner machine would be latest technology with highest specifications.

3.1.3 Digitizing the Mouza Maps

On screen digitization method will be used for digitization of mouza maps. Latest available GIS software will be used for this purpose. Feature wise manuscript will be developed for digitizing the mouza maps and all features will be store as layer coverage with a separate ID or code number of respective features in GIS database. To keep uniqueness of all the features the ID or code number of respective features will be finalized as per suggestion and discussion with Project Director (PD).

To carry out the digitization and other related works for barnd mouza map catable, there would be adequate stations (PCs) to the connectors which will be placed at UDD, Dhaka offices during whole period to carry out the work in time. During the digitization accuracy has to be ensured by the contractor.

3.2 Manuscript

01: Point Features

This manuscript will contain all point features like boundary and other pillars, traverse stations, GT stations, benchmarks (BM) etc. Every point will contain a numeric user ID representing feature type.

02: Polygon Features

This manuscript will contain all polygon features or closed boundary like water bodies, land use and topography. All features will be closed polygon and every polygon contains a numeric user ID representing feature type.

03: Line Features

This manuscript will contain all line type features like administrative boundaries, roads, drainage, bridge /culvert, embankment/ flood wall, sluice gate, water ways, rail ways etc.

3.3 Quality measures during digitizing (Edit Plot Checking of Digitized Coverage)

After digitization of mouza maps edit plots will be produced containing all the features in different colors to maintain the quality of the digitization of the mouza maps and ensure the proper projection while map projections will be carried out. The digitized mouza maps will be checked and verified by superimposing on the original mouza maps using the light table. This checking will be done with the joint team of UDD and the respective contractor. By this edit plot check all possible errors (missing arcs, dislocated arcs, wrong or missing polygon labels, tic location and ID etc) will be solved and final mouza maps will be prepared. After finalization of digitization of mouza maps all data both soft copy and hard copy will be submitted to Project Director (PD).

3.4 Mouza Maps Collection

The first task of this project is collection of Mouza Maps. Mouza Maps have been collected by Geomark from Urban Development Directorate (UDD). Total 417 (four hundred and seventeen) RS Mouza Maps have been collected from Urban Development Directorate (UDD). List of collected mouza maps have been attached with progress report.

Table: List of Mouza maps

List of Mauza Maps in MSDP Project Area

Sl No	Union Name	Mauza Name	JL NO.	Total Sheet	Remarks
1	Akua	Akua (Part)	104	16	
2		Barera	107	6	
3	Baera (Kewatkhali)	Baera Bhaluka (Part)	94	3	
4	Bhabkhali	Sutiakhali	125	2	
5		Beltali	124		
6		Bara Bilarpar	123	2	
7		Charkhai	128	3	
8		Madal	122	1	
9		Dari Bhabkhali	126	2	
10		Bhabkhali	127	4	
11		Panghagra			
12		Unairpar			
13		Nehaliakanda	130	1	
14		Chak Banpathalia			
15		Narayanpur	132	1	
16		Char Amin			
17		Vagnamari	Vagnamari	131	6
18	Naobhanga		31	3	
19	Khoda Baksapur				
20	Volar Algi		30	1	
21	Char Bhabakhali		33	2	
22	Char Ishwardia	Char Barabila			

Final Report on *Supplying of Digitized Mouza Maps of MSDP (2011-2031) project area (Hard & Soft copy) with necessary Geo-referencing by RTK GPS based Ground Control Point (GCP)*

23		Char Haripur	80	3	
24		Bajitpur	82	1	
25		Lakshmipur	79		
26		Char Ishwardia	78	8	
27	Char Nilakshmia	Sahabajpur	83	1	
28		Rashidpur	84	1	
29		Modarpur	85		
30		Char Raghurampur	81	3	
31		Mahazzampur	87	2	
32		Char Durlabh	86		
33		Raghabpur	89	3	
34		Phaliamarir Char	92	1	
35		Bijoyagar	88	1	
36		Char Nilakshmia	93	6	
37		Rajganj	90	1	
38		Char Ghoramara	91	1	
39	Dapunia	Hartti	65	1	
40		Azmatpur	66	2	
41		Bade Kalpa	105	2	
42		Dapunia			
43		Sasyamala	109	3	
44		Goshta	110	3	
45		Phulbaria	111	1	
46		Talma	112	1	
47		Baruri	115	1	
48		Kawalti	116	1	
49		Panch Kahania	114	1	
50		Katla Sen	113	3	
51	Ghagra	Ghagra	108	9	
52		Suhila	117		
53		Gopalnagar			
54		Maijhati	118	1	
55		Parail			
56	Khagdahar	Dulalbari	53	2	

Final Report on *Supplying of Digitized Mouza Maps of MSDP (2011-2031) project area (Hard & Soft copy) with necessary Geo-referencing by RTK GPS based Ground Control Point (GCP)*

57		Jelkhanar Char	52	6	
58		Char Gobinda	57	1	
59		Bairan	58	1	
60		Swalpa Barian	56	1	
61		Kalyanpur	55	1	
62		Taragai	54	1	
63		Mirzapur	60	2	
64		Kismat	61	1	
65		Bahadurpur	59	1	
66		Khagdahar (Part)	70	3	
67		Ghanashyampur	64	1	
68		Maijbari	63	2	
69		Baisakhai	62	1	
70		Rahamatpur	67	1	
71		Hasibasi	69	1	
72		Kalikapur	68	1	
73		Kalpa	73	1	
74		Dholadia	71	14	
75		Gologanda	72	10	
76		Kashor	75	14	
77		Gohalkandi	74	13	
78		Shehra	102	3+	
79		Krishnapur	100	6	
80		Vatikasar	101	11	
81	Mymensingh Paurashava	Balashpur	99	16	
82		Maskandha	103	0	
83		Kayat Khali	98	23	
84		Chatrapur	97	30	
85		Chalkchatrapur	95	4	
86		Rakta	96	6	
87		Mymensingh	76	49	
88		Char Shera	77	1	
89		Sirta	44	3	
90	Sirta	Kharichar Char	46	3	
91		Kandarpapur		0	

Final Report on *Supplying of Digitized Mouza Maps of MSDP (2011-2031) project area (Hard & Soft copy) with necessary Geo-referencing by RTK GPS based Ground Control Point (GCP)*

92		Char Bhabanipur	48	4	
93		Para Lakshmir Algi		0	
94		Durgapur	49	0	
95		Gobindapur	50	4	

417

3.5 Scanning of Mouza Maps

Collected RS Mouza Maps are scanning for digitization . Five Hundred pixel per inch method used for scanning in Flat bed Scanner Machine. The mouza maps that have been collected by Urban Development Directorate (UDD) and being scanning is given below from some of them.

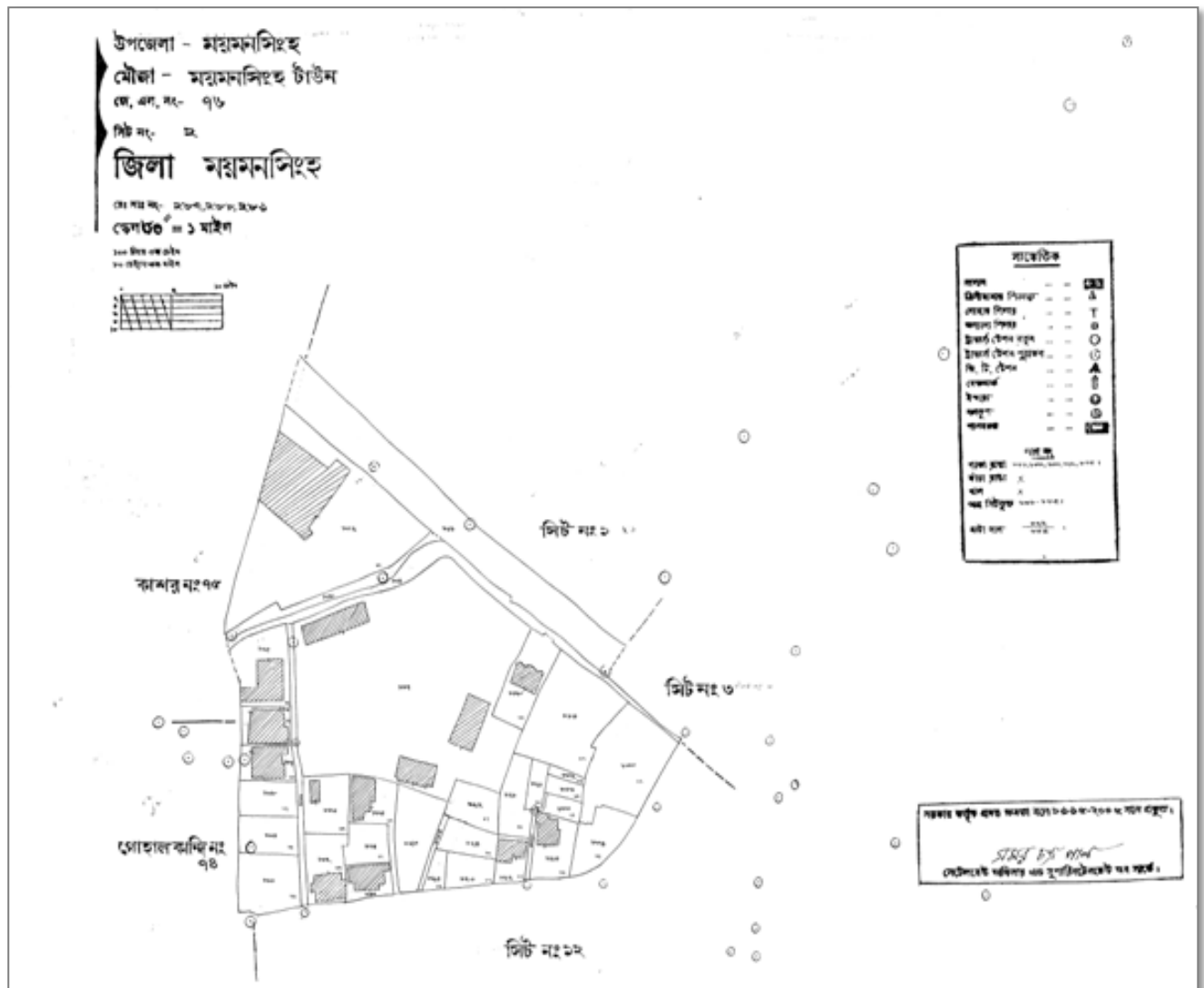


Figure 2: Scanned Mouza Map

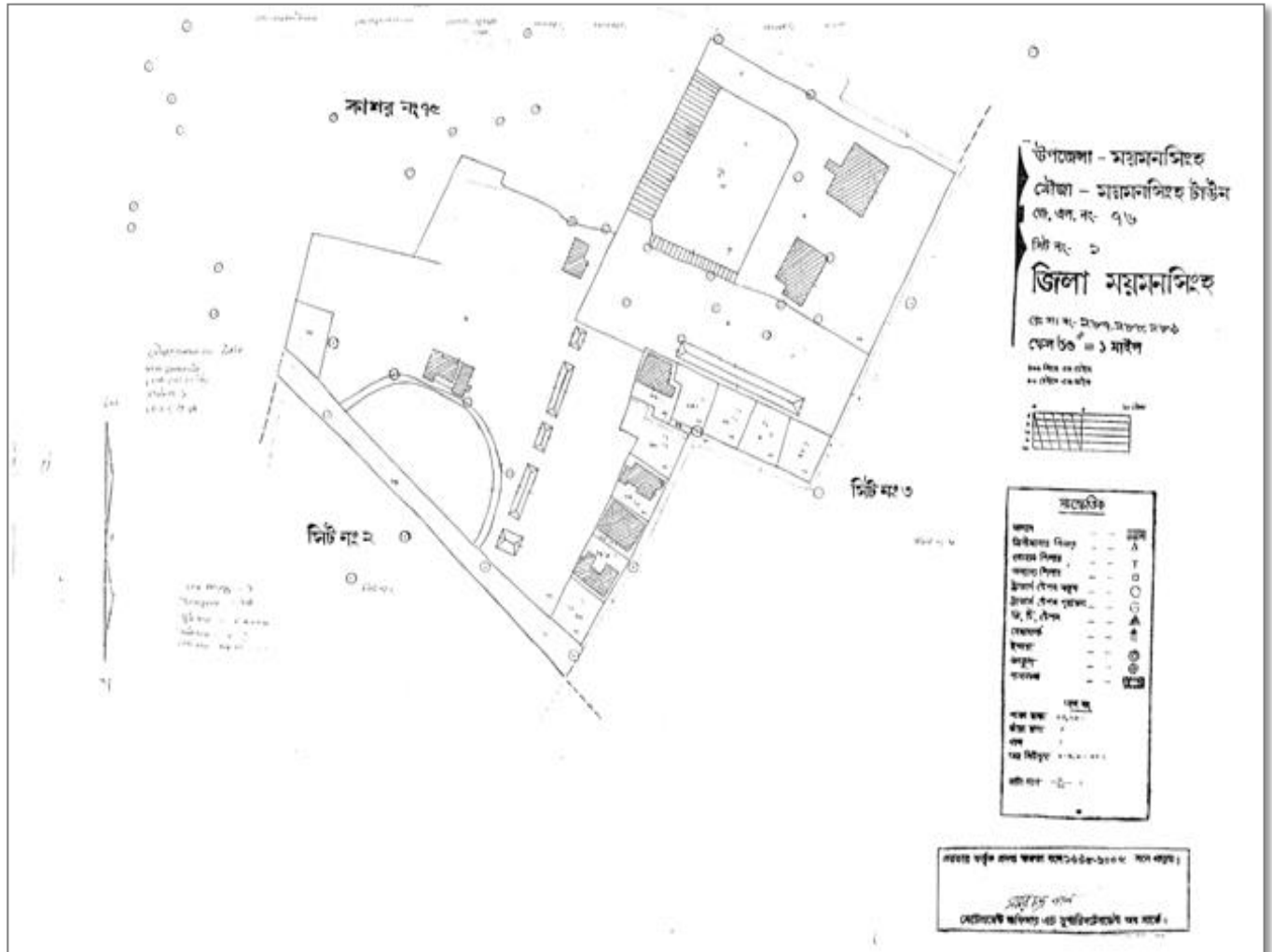


Figure 3: Scanned Mouza Map

3.6 GIS Database Preparations

Georeferencing of GIS mauza map needs extensive digitization work, Ground Control Point (GCP) Survey, data processing, and field verification. The total work comprises the following items:

- Collection of RS/CS Maps,
- Scanning of Mauza Maps,
- Digitization of RS/CS Maps,
- Edit Plot Check of Digitized Coverage,
- Identification of GCP on digitized RS/CS Maps,
- GCP survey,
- Geo-referencing of RS/CS Maps, and
- Preparation of Arc/Info Coverage and Map Layout of RS/CS Maps

Collection of RS and CS Mauza Maps

Mauza sheets/maps of RS or latest version will be collected covering the entire project area. The mauza sheets having distortion due to rapping or pasting cloths/tape in the mauza maps will be avoided during collection of mauza maps. Before scanning of mauza maps all collected mauza maps will be submitted to UDD for review and quality check/authentication.ww

Scanning of Mauza Maps

To minimize the distortion and deviations scanning of mauza maps will be carried out using drum scanner. Extra care will be taken for maintaining the proper rotation and alignment of mauza sheets during scanning. Later on all scanned mauza files will be submitted in soft format to UDD for preservation.

Digitization of Mauza Maps

On screen digitization method will be used for digitization of mauza maps. GIS based Arc/Info or Arc/View software will be used for this purpose. Feature wise manuscripts will be developed for digitizing the mauza maps and all features will be stored as layer coverage with a separate ID or code number of respective features in the GIS database. To keep uniqueness of all features the ID or code numbers of respective features will be finalized as per suggestion and discussion with UDD.

Manuscript-1: Point Features

This manuscript will contain all point features like boundary and other reference pillars, traverse stations, GT stations, bench marks etc. Every point will be stored with a numeric user ID representing feature type.

Manuscript-2: Polygon Features

This manuscript will contain all polygon type or closed boundary features like pond, water bodies, structures, plot and mauza boundaries etc. All features will be stored as polygon having a numeric user ID representing feature type.

Manuscript-3: Line Features

This manuscript will contain all line type features like roads, railways, drainage, sewerage line, embankment/flood wall etc. All features will be stored as line having a numeric user ID representing feature type.

Edit Plot Check of Digitized Coverage

After digitization of mauza maps, edit plots will be produced containing all the features and boundaries in different colors. The digitized mauza maps will be checked and verified by superimposing on the original mauza maps using the light table. The checking of digital mauza maps will be done by the joint team of UDD and consultant. All possible errors (missing arcs, dislocation arcs, wrong or missing polygons, labels, tic locations, ID etc.) will be solved with this edit plot check and final digital mauza maps will be prepared. After digitization and necessary edit plot check, both soft and hard copy of all the digital mauza maps will be supplied to UDD for preservation.

Identification of GCP (Tic) on digitized RS and CS Maps

At least 4 nos. of Ground Control Points (GCP) will be selected on each mauza sheets identical with the real field condition. For accuracy and quality work maximum efforts will be given to identify as many as GCP for each mauza sheets. A joint team of UDD and consultant will select the GCP on mauza sheets.

Geo-referencing of RS and CS Mauza Maps (Joining of Mauza Maps)

Georeferencing of mauza sheets will be done using GCP points (Northing, Easting) and GIS based software ArcGIS 10 or latest version with approval of PD, UDD. After georeferencing of all the mauza sheets of the project area, the mosaic mauza maps of the project area will be found having all the mauza features (point, line, and polygon) with GCP points in different layers.

Methodology of Edge Matching of Mauza Maps

We have already explained our methodology of composite map preparation. Therein we have narrated the process through which all the sheets of the mauza maps will be mosaiced. In this section we again explain that. We know that a RS/CS mauza map consists of a single sheet or more than one sheet. That means that the mauza maps of the project area are divided in to many sheets. For preparing plans we need to mosaic them to have a composite map by edge matching. Edge matching will be done with the help of GPS readings. The four TIC points on each sheet having latitude and longitude readings will enable the work of edge matching with perfection.

Preparation of Arc GIS Coverage (Topology) of the Project Area

Final map coverage and layout of the project area (mosaic mauza of project area) will be done as per specification suggested by UDD using GIS based ArcGIS software. All the features of mauza maps including plot, mauza and boundary of the project area will be identified and shown in the base/study area maps in separate layer. Later on this study area map will be incorporated in the physical and topographic survey maps. Both soft and hard copy of base/study area map will be supplied to UDD as per specification and scale mentioned in the TOR.

3.7 Digitization

Mouza maps digitization is the ultimate goal of this project. Before digitization geo-referencing is mandatory for projection. Digitization work is continuing.

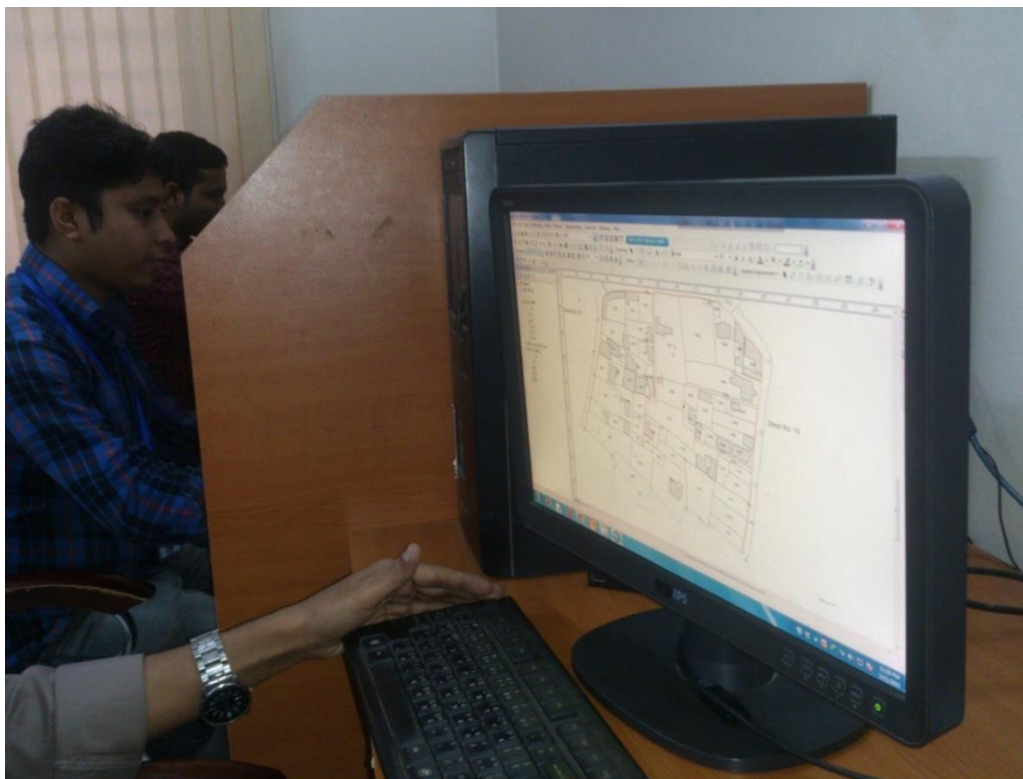
Strategic Plan for Mymensingh District Town and Adjacent Area

Table 2: Feature Ids for Mauza Map Digitization

Line Features			Point Features		
Sl No	Line Type	Line Id	Sl No	Point Type	Point Id
1	Mauza Boundary	11	1	Boundary Pillar	41
2	Sheet Boundary	12	2	Bench Mark	42
3	Sheet Match - Line	13	3	Traverse Station (Old)	43
4	Plot Boundary	14	4	Traverse Station (New)	44
5	Road	21	5	GT Station	45
6	Halot	22	6	Other Pillars	46
7	Canal	23	7	Pucca Well	51
8	River	24	8	Tube Well	52
9	Rail Line	25	9	Mosque	53
10	Canal Within Plot	26	10	Temple	54
11	Halot Within Plot	27	11	Demarcation Pillar	71
12	Embankment	28	12	Settlement Pillar	72
13	Pond	29	13	Pucca Pillar	73
14	Municipal Boundary	30	14	Municipality Pillar	74
15	Unknown	99	15	Iron Pillar	75
			16	Common Point	80
			17	Other Point Feature	99

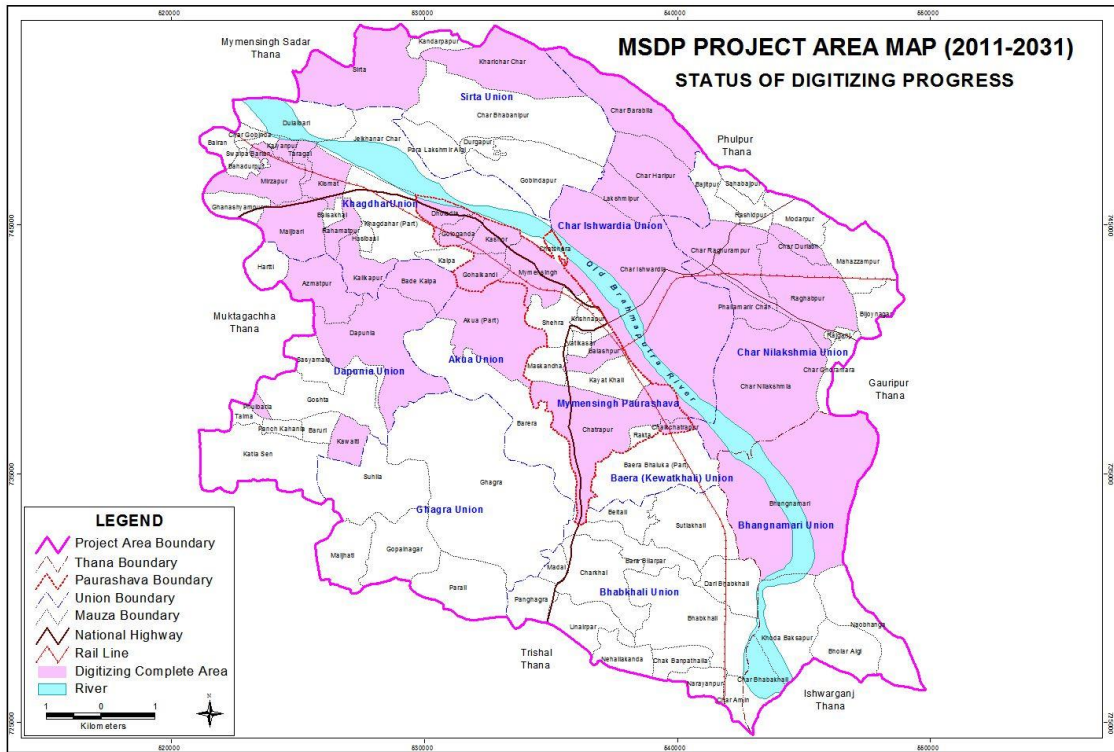


Photograph: Screenshot Mouza digitizing processes

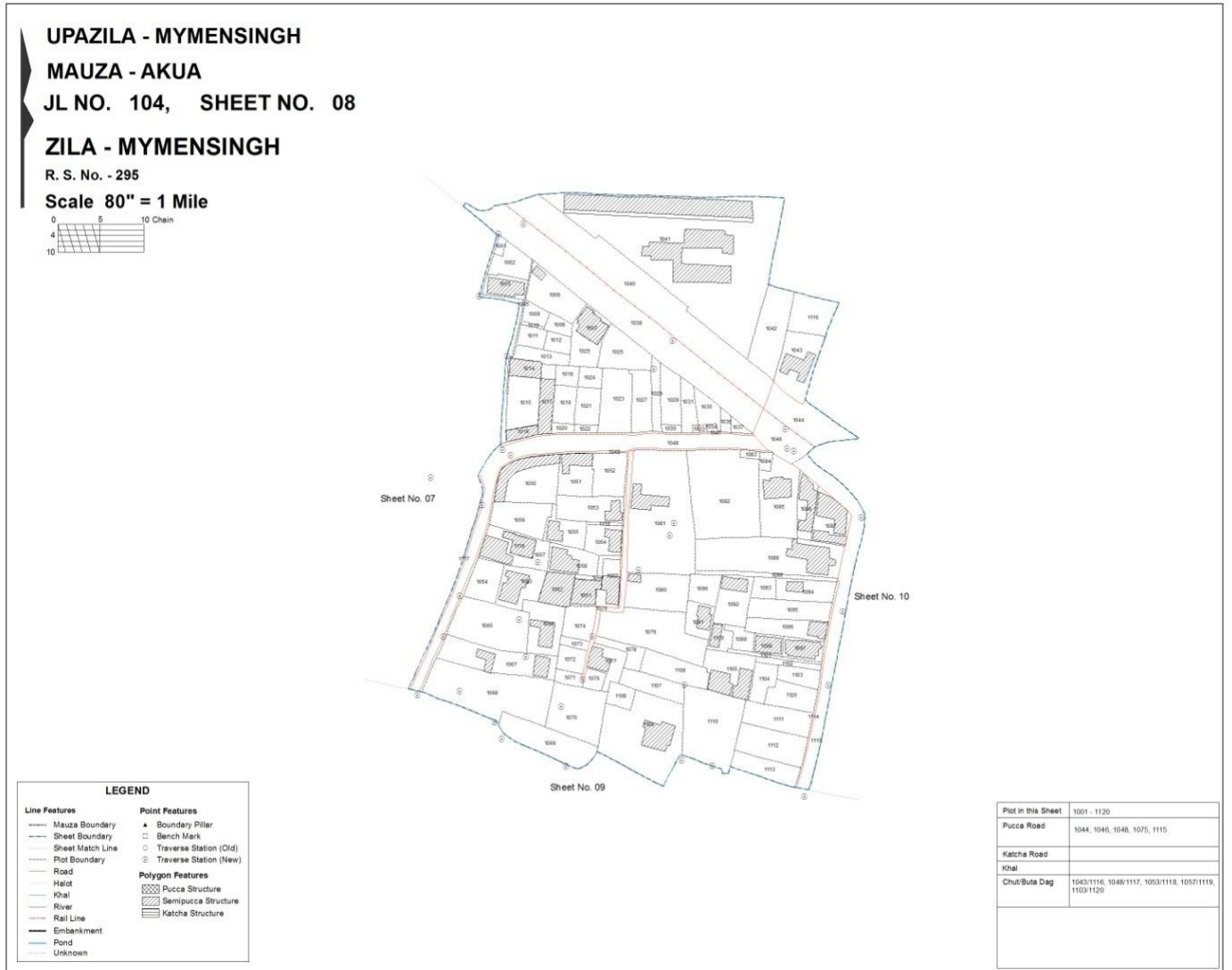


Photograph: Digitizing Mouza Map

Final Report on *Supplying of Digitized Mouza Maps of MSDP (2011-2031) project area (Hard & Soft copy) with necessary Geo-referencing by RTK GPS based Ground Control Point (GCP)*



3.8 Edit Plot Check



Photograph: Digitized Mouza Map



Figure: Edit plot check on Light table

3.9 Field Survey

GPS and GIS Technique

The automation, digitization and geo-reference of planning information deserves attention to the quality, vision of the extent of future applications, flexibility for the possible user groups and openness to easy access, all of which we are lacking in our country

Now a day all the planning activities need to deal with a large amount of digital and spatial data and maps, charts and reports. The Planners also need an automated information system like Geographical Information System (GIS) capable of dealing with spatial database to make their task efficient and effective. For which a digital and geo-reference data and information are very much needed. A comprehensive GIS includes software and hardware used to capture, store, organize, manipulate, analyze and display spatially referenced information. Easy manipulation and display of information helps to facilitate the decision making process by allowing planners to customize the maps and models produced.

GPS Based Advanced Survey Technique

Digitizing of existing mauza maps is time consuming with possibility of error, which can be easily converted to digital map by using scanner and processing through appropriate software with high accuracy. Spatial data collection and geo-reference digital mapping have now become very easy with satellite based advanced survey techniques using Global Positioning System (GPS) and Geographical Information System (GIS) with accuracy of centimeter level. Furthermore the development of high-resolution images helps to determine the spatial features as well as verify the survey data more accurately.

The Global Positioning System (GPS) is worldwide all-weather radio-navigation and positioning system formed from a constellation of 24 satellites and their 5 nos. ground control & monitor stations. GPS receivers use these US Navigation Satellites for Timing and Ranging (NAVSTAR) to calculate positions accurate to matter of meters. GPS receives radio waves, modulated for positioning, transmitted by a maximum number of 24 satellites, which enables to work out the distance between satellite and observation points. By receiving radio waves from four satellites simultaneously it is possible to find out the three-dimensional co-ordinates and time (UTC) of the observation point with an accuracy level which can not be conceived in traditional ground survey. The facility of GPS has been utilized in different kinds of ground surveys including geodetic, topographic and hydrographic survey in the recent times. Differential Global Positioning System (DGPS) is different versions of GPS technology, each with its own range of applicability and accuracy level. GPS based surveying has a number of advantages over conventional surveying methods. These are:

- Highly accurate
- Very fast
- Line of sight not required
- Digital/Computerized data storage, processing facility
- Unified 3-dimensional global co-ordinate system (x,y,z) output

GPS based survey with its computer based data storage and processing facility on and off the field offers immense flexibility in map production under a GIS environment. To ensure precision and accuracy in survey work and to facilitate georeference/digital map production by GIS software and finally to complete the whole work in a rather shortened time schedule, GPS technology was the best and logical approach to be followed.

Differential Global Positioning System (DGPS)

To obtain precise position from a GPS receiver, we use techniques called “Differential GPS”. This involves at least two GPS receivers. One is stationary, at a known point or bench mark, we call this the “Base or Reference” receiver/unit and the other rover receiver/unit. The base unit ties all the satellite measurements into a solid local reference i.e. known point or bench mark. The Base receiver measures and records the timing errors and then transmit correction information to the other receivers those are roving around. The roving GPS receivers, possibly moving at an unknown point, calculates precise position by using the signals it receives from the satellites, and the correction information receives via radio from the Base. The correction information could be transmitted through online radio communication system or could be incorporated by off-line data processing software. Differential GPS usually gives about one meter accuracy.

Real Time Kinetics (RTK) GPS

RTK is a special form of Differential GPS that gives about one hundred times greater accuracy. The GPS system uses a coded signal from which a receiver derives distance and thus position. The GPS satellite provides the equivalent of tape measure from space. The tape labeled tick marks at ~300m intervals (the C/A code), as well as unlabelled tick marks at ~20m intervals (the carrier). A GPS receiver can measure the code to one-meter (1m) precisions, and the carrier to one-centimeter (1cm) precision. A receiver that can compute the “Labels” on the carrier can then deliver centimeter position accuracy. This is what RTK does.

Establishment of Reference Station for DGPS Survey

Reference stations for Differential Global Positioning System (DGPS) survey will be established in the project area. RTK-GPS static survey and baseline network adjustment technique will be used for this purpose. JICA BMs in or around the project area will be used as reference for establishment of DGPS reference stations. These reference stations will be used for recording and transmitting differential correction for DGPS rover units.

3.10 Field Reconnaissance Survey

Field reconnaissance survey was held by geomark team from 25th March to 5th April 2013 with Mouza map plot identified GPS is completed in the project area. GPS survey has been conducted along with the mouza maps and all the GPS points have been marked in mouza maps. Some of the geo-coordinate is being given in the respected mouzas as sample.



Picture 1: Identification GCP on mouza map

3.11 RTK GPS Survey

As the mouza maps have no geo-coordinate, for this a GPS survey was essential. RTK GPS survey has been conducted to collect the geo-coordinates. Geo-coordinates collection points have been marked on the map.

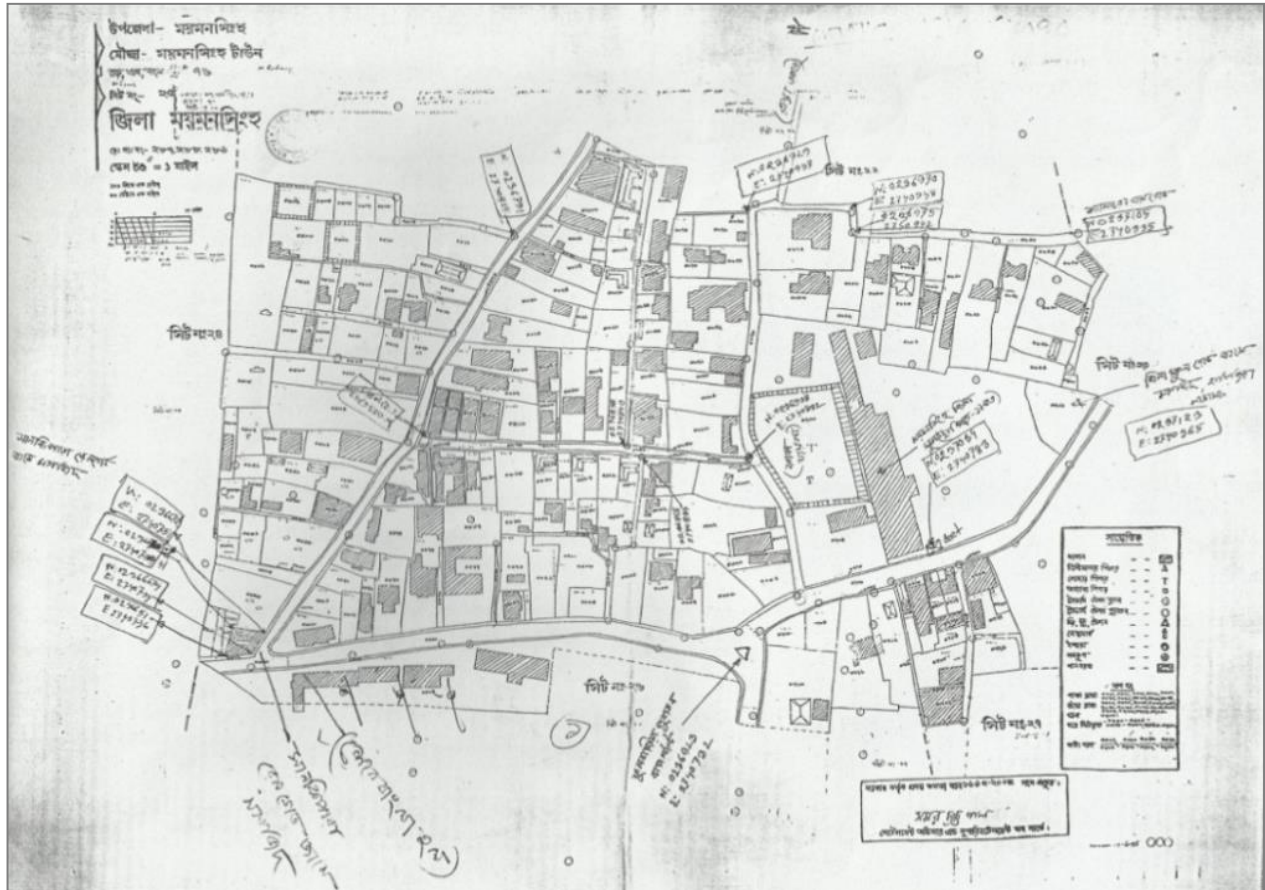


Figure 4: GPS points on collected Mouza Map

Table 1: Primary geo-coordinate has taken by hand GPs on some mouza sheets

Mouza Name	J. L No.	Seat No.	Plot No.	Point Location	GPS Reading	
					Latitude (N)	Longitude (E)
Mymensingh Town	76	25	5701	Zila school road to madrsra	0237123	2740365
			5693	Shamacharan Roy road	0237105	2740935
			5702	Mymensingh zila school	0237043	2740783
			5707	Old bus stand	0236923	2740732
			5665	Open land	0236908	2740832
			5649	Central side	0236858	2740840
			5675	North-east corner	0236791	270951
			5561	Mosque 1 st side	0236651	2740736
				2 nd side	023674	2740734
				3 rd side	023663	2740751
				4 th side	0236672	2740751
Mymensingh Town	76	1	1	Shikder bari	0237275	2741527
			1	TTC	0237227	2741461
Mymensingh Town	76	26	6104	Veterinary hospital	0236921	2740660
			6100	Rail crossing	0236899	2740530
Mymensingh Town	76	30	7911	Road	0237997	2740417

Mouza Name	J. L No.	Seat No.	Plot No.	Point Location	GPS Reading	
					Latitude (N)	Longitude (E)
			7826	Road side	0237844	2740531
			8015	Swadeshi bazar	0237977	2740624
			8055	road	0238073	2740579
			8108	road	0238104	2740606
			8130	Boro bazaar road	0238177	2740686
			8042	Sunderban Currier service	0238215	2740619
			8154	Kotoali model thana	0238212	2740576
			8188	Chak bazar	0238240	2740608
			8187	Truck patti	0238222	2740524
			8346	Open land	0238184	2740466
			8308	Maharaja road	0238144	2740313
			8294	Road	0238119	2740292

Reference: Mouza map with Tick

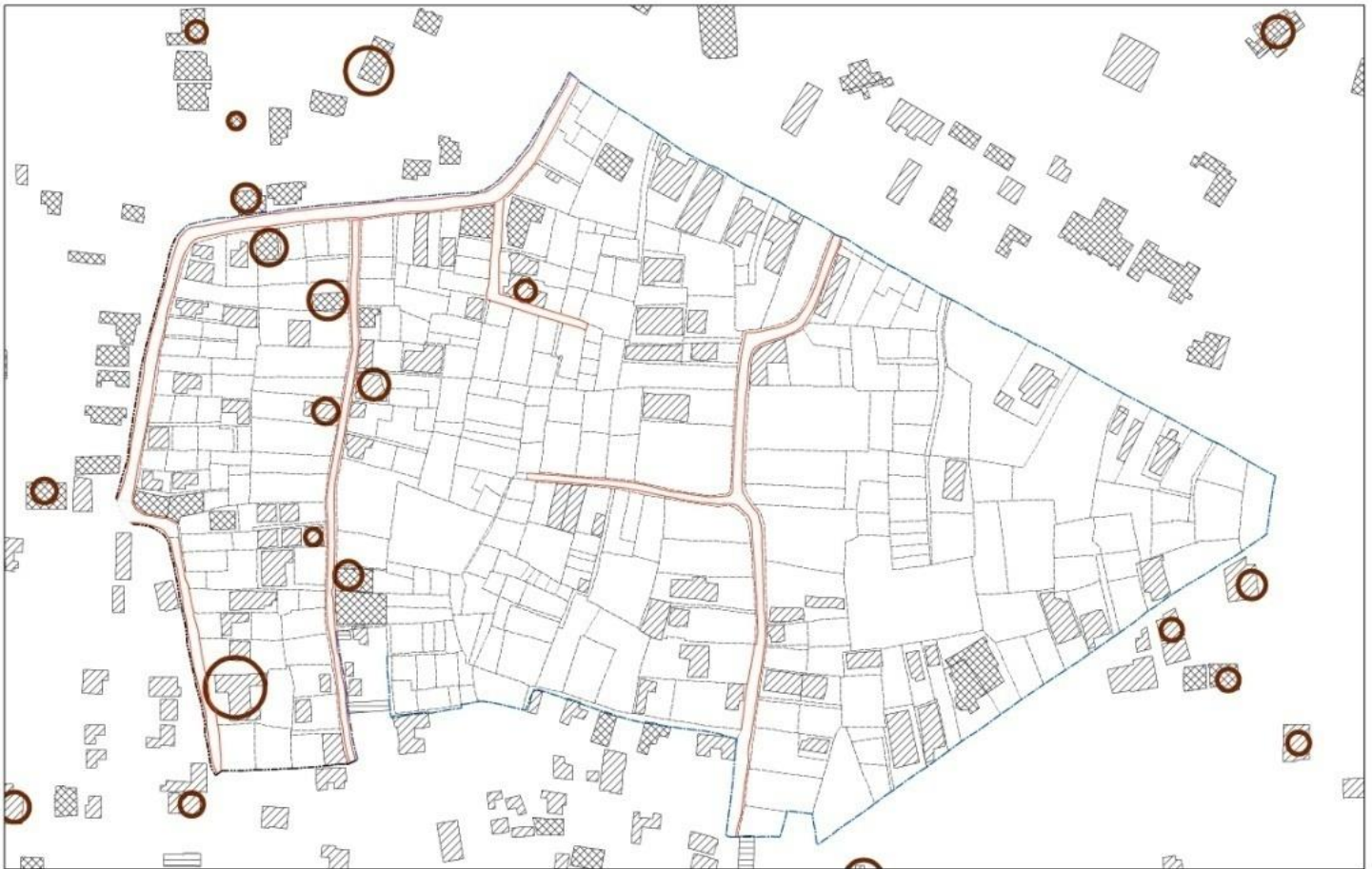
3.12 GCP Collection from Field by RTK GPS.

RTK is a special form of Differential GPS that gives about one hundred times greater accuracy. The GPS system uses a coded signal from which a receiver derives distance and thus position. The GPS satellite provides the equivalent of tape measure from space. The tape labeled tick marks at ~300m intervals (the C/A code), as well as unlabelled tick marks at ~20m intervals (the carrier). A GPS receiver can measure the code to one-meter (1m) precisions, and the carrier to one-centimeter (1cm) precision. A receiver that can compute the “Labels” on the carrier can then deliver centimeter position accuracy.

Final Report on *Supplying of Digitized Mouza Maps of MSDP (2011-2031) project area (Hard & Soft copy) with necessary Geo-referencing by RTK GPS based Ground Control Point (GCP)*

There are altogether 499 number of Mauza sheets within the MSDP area. Out of 499 nos. of mauza sheets, 250 nos. of those sheets have been geo-referenced and checked on ground according to the relevant information printed on each sheets using the RTK GPS based survey method with the referenced BM pillars within MSDP area

Target structure With Mouza Map
Sheet-12 JL-76, Mouza-Mymensingh Town



3.12.1 Project Parameter:

Projection System	BTM
Spheroid	Everest 1830
Scale Factor	0.9996
Central Meridian	90 Degree East
False Easting	500000
False Northing	-2000000
Latitude of Origin	0 Degree
Seven-Parameters	283.729, 735.942, 261.143, 0.0, 0.0, 0.0, 1.0
Unit	Meter

3.12.2 BM and Reference bench Mark

All those geo-referencing processes has been conducted with the help of ten (10) number of Bench Mark (BM) pillars which were established by the consultant with the reference of (1) BM Pillar no-6117 established by Survey of Bangladesh (S.O.B) at Shambuganj U.C. High School, Ragurampur, Mymensingh for vertical datum and also with the reference of (2) DGPS Beacon Reference Station at

Rupchandpur, Mymensingh for horizontal datum. After cross checking (dated on 25th to 27th August, 2014) by joint team of consultants and MSDP of UDD, the quality of (X, Y & Z) value of Digital Terrain Model (DTM) points of the map on ground, two type of error have been identified which are averages (1) +/-0.14 meter in urban area (municipality) and (2) +/-0.21 meter in rural area (union)

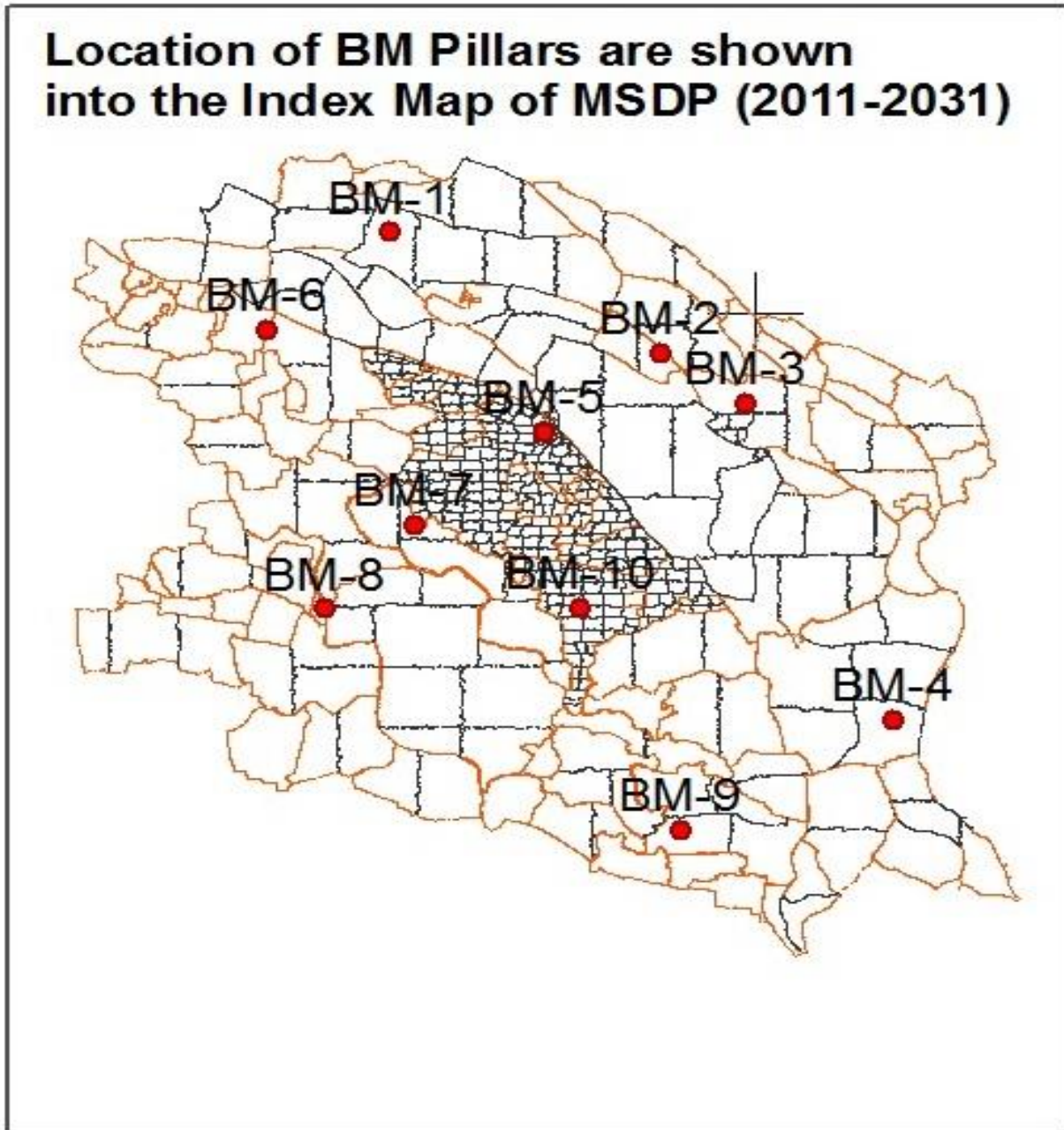
Details of Ten Number of BM Pillars of MSDP (2011-2031)

SL	Name	Longitude(E)	Latitude(N)	RL(Z)
1	BM-01	90° 22' 34.7592"	24° 48' 25.1064"	14.337
2	BM-02	90° 25' 57.45"	24° 46' 48.4104"	12.616
3	BM-03	90° 27' 6.897"	24° 45' 54.2442"	15.374
4	BM-04	90° 28' 42.5064"	24° 42' 6.7062"	12.884
5	BM-05	90° 24' 35.6616"	24° 45' 38.4588"	15.162
6	BM-06	90° 20' 58.5378"	24° 46' 58.8864"	14.388
7	BM-07	90° 22' 54.9258"	24° 44' 28.2474"	10.713
8	BM-08	90° 21' 27.255"	24° 43' 8.6046"	13.630
9	BM-09	90° 26' 14.9532"	24° 40' 7.0782"	11.686
10	BM-10	90° 24' 56.8938"	24° 43' 11.7948"	11.483

Details of Two Number of Referenced BM Pillars of MSDP (2011-2031)

	BM-64			
11	PWD	90° 27' 6.3972"	24° 45' 54.2232"	14.738
	SoB-6117			
12	JICA 1992	90° 27' 9.0972"	24° 45' 53.4486"	13.683

3.12.3 BM Location:

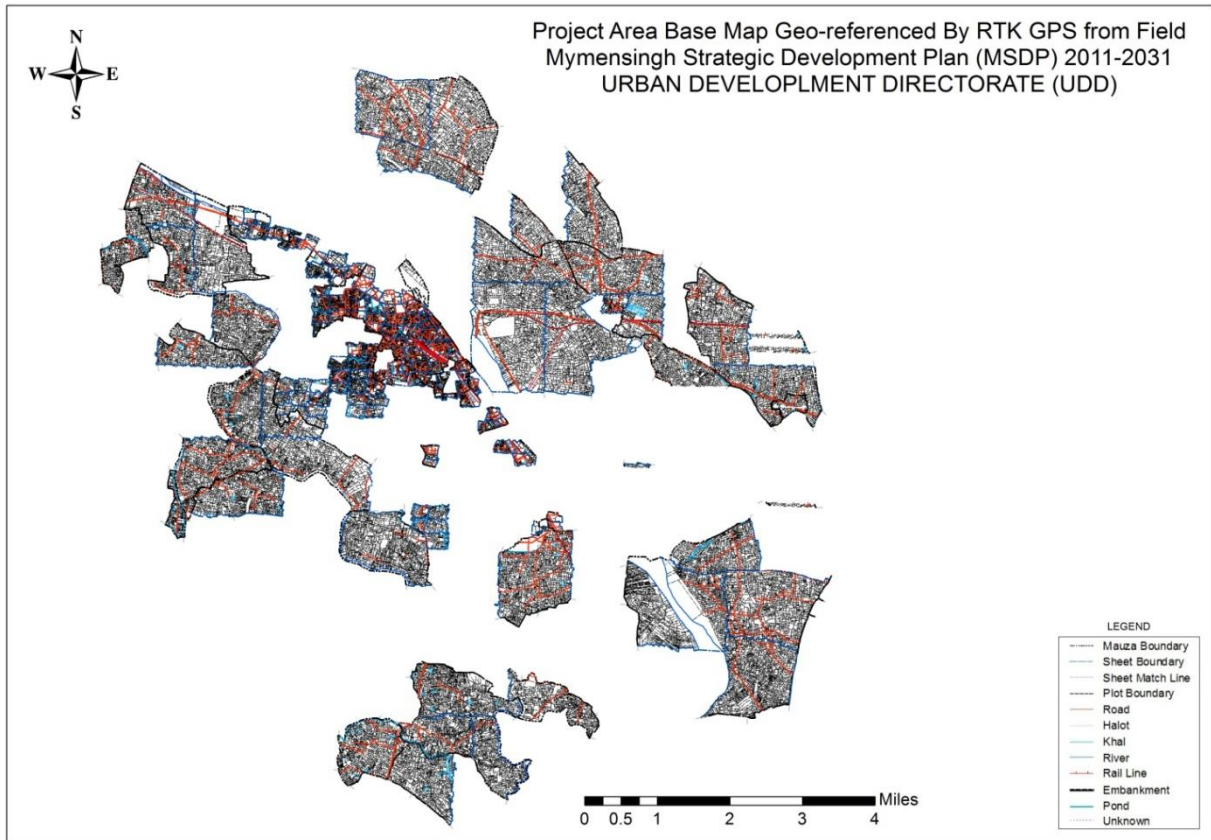


Final Report on *Supplying of Digitized Mouza Maps of MSDP (2011-2031) project area (Hard & Soft copy) with necessary Geo-referencing by RTK GPS based Ground Control Point (GCP)*



Photograph : Mouza Map gerefenced by RTK GPS Survey

Project Area Base Map Geo-referenced By RTK GPS from Field



List of Map Geo-referenced By RTK GPS from Field

DISTRICT	THANA_NAME	UNION_NAME	MAUZA_NAME	JL_NO	SHEET_NO
Mymensingh	Mymensingh Sadar	Mymensingh Paurashava	Dholadia	71	9
Mymensingh	Mymensingh Sadar	Mymensingh Paurashava	Dholadia	71	8
Mymensingh	Mymensingh Sadar	Mymensingh Paurashava	Dholadia	71	7
Mymensingh	Mymensingh Sadar	Mymensingh Paurashava	Dholadia	71	6
Mymensingh	Mymensingh Sadar	Mymensingh Paurashava	Dholadia	71	3
Mymensingh	Mymensingh Sadar	Mymensingh Paurashava	Dholadia	71	2
Mymensingh	Mymensingh Sadar	Mymensingh Paurashava	Dholadia	71	1
Mymensingh	Mymensingh Sadar	Mymensingh Paurashava	Gologanda	72	4
Mymensingh	Mymensingh Sadar	Mymensingh Paurashava	Gologanda	72	2
Mymensingh	Mymensingh Sadar	Mymensingh Paurashava	Gohalkandi	74	2
Mymensingh	Mymensingh Sadar	Mymensingh Paurashava	Gohalkandi	74	3
Mymensingh	Mymensingh Sadar	Mymensingh Paurashava	Gohalkandi	74	4
Mymensingh	Mymensingh Sadar	Mymensingh Paurashava	Gohalkandi	74	5

Final Report on *Supplying of Digitized Mouza Maps of MSDP (2011-2031) project area (Hard & Soft copy) with necessary Geo-referencing by RTK GPS based Ground Control Point (GCP)*

Mymensingh	Mymensingh Sadar	Mymensingh Paurashava	Gohalkandi	74	12
Mymensingh	Mymensingh Sadar	Mymensingh Paurashava	Gohalkandi	74	13
Mymensingh	Mymensingh Sadar	Mymensingh Paurashava	Gohalkandi	74	14
Mymensingh	Mymensingh Sadar	Mymensingh Paurashava	Kashor	75	5
Mymensingh	Mymensingh Sadar	Mymensingh Paurashava	Kashor	75	6
Mymensingh	Mymensingh Sadar	Mymensingh Paurashava	Kashor	75	7
Mymensingh	Mymensingh Sadar	Mymensingh Paurashava	Kashor	75	11
Mymensingh	Mymensingh Sadar	Mymensingh Paurashava	Kashor	75	12
Mymensingh	Mymensingh Sadar	Mymensingh Paurashava	Kashor	75	13
Mymensingh	Mymensingh Sadar	Mymensingh Paurashava	Mymensingh Town	76	1
Mymensingh	Mymensingh Sadar	Mymensingh Paurashava	Mymensingh Town	76	2
Mymensingh	Mymensingh Sadar	Mymensingh Paurashava	Mymensingh Town	76	3
Mymensingh	Mymensingh Sadar	Mymensingh Paurashava	Mymensingh Town	76	4
Mymensingh	Mymensingh Sadar	Mymensingh Paurashava	Mymensingh Town	76	11
Mymensingh	Mymensingh Sadar	Mymensingh Paurashava	Mymensingh Town	76	12

Final Report on *Supplying of Digitized Mouza Maps of MSDP (2011-2031) project area (Hard & Soft copy) with necessary Geo-referencing by RTK GPS based Ground Control Point (GCP)*

Mymensingh	Mymensingh Sadar	Mymensingh Paurashava	Mymensingh Town	76	13
Mymensingh	Mymensingh Sadar	Mymensingh Paurashava	Mymensingh Town	76	14
Mymensingh	Mymensingh Sadar	Mymensingh Paurashava	Mymensingh Town	76	15
Mymensingh	Mymensingh Sadar	Mymensingh Paurashava	Mymensingh Town	76	16
Mymensingh	Mymensingh Sadar	Mymensingh Paurashava	Mymensingh Town	76	17
Mymensingh	Mymensingh Sadar	Mymensingh Paurashava	Mymensingh Town	76	18
Mymensingh	Mymensingh Sadar	Mymensingh Paurashava	Mymensingh Town	76	19
Mymensingh	Mymensingh Sadar	Mymensingh Paurashava	Mymensingh Town	76	20
Mymensingh	Mymensingh Sadar	Mymensingh Paurashava	Mymensingh Town	76	21
Mymensingh	Mymensingh Sadar	Mymensingh Paurashava	Mymensingh Town	76	22
Mymensingh	Mymensingh Sadar	Mymensingh Paurashava	Mymensingh Town	76	23
Mymensingh	Mymensingh Sadar	Mymensingh Paurashava	Mymensingh Town	76	24
Mymensingh	Mymensingh Sadar	Mymensingh Paurashava	Mymensingh Town	76	25
Mymensingh	Mymensingh Sadar	Mymensingh Paurashava	Mymensingh Town	76	25
Mymensingh	Mymensingh Sadar	Mymensingh Paurashava	Mymensingh Town	76	26

Final Report on *Supplying of Digitized Mouza Maps of MSDP (2011-2031) project area (Hard & Soft copy) with necessary Geo-referencing by RTK GPS based Ground Control Point (GCP)*

Mymensingh	Mymensingh Sadar	Mymensingh Paurashava	Mymensingh Town	76	27
Mymensingh	Mymensingh Sadar	Mymensingh Paurashava	Mymensingh Town	76	28
Mymensingh	Mymensingh Sadar	Mymensingh Paurashava	Mymensingh Town	76	29
Mymensingh	Mymensingh Sadar	Mymensingh Paurashava	Mymensingh Town	76	30
Mymensingh	Mymensingh Sadar	Mymensingh Paurashava	Mymensingh Town	76	31
Mymensingh	Mymensingh Sadar	Mymensingh Paurashava	Mymensingh Town	76	32
Mymensingh	Mymensingh Sadar	Mymensingh Paurashava	Mymensingh Town	76	33
Mymensingh	Mymensingh Sadar	Mymensingh Paurashava	Mymensingh Town	76	34
Mymensingh	Mymensingh Sadar	Mymensingh Paurashava	Mymensingh Town	76	35
Mymensingh	Mymensingh Sadar	Mymensingh Paurashava	Mymensingh Town	76	36
Mymensingh	Mymensingh Sadar	Mymensingh Paurashava	Mymensingh Town	76	37
Mymensingh	Mymensingh Sadar	Mymensingh Paurashava	Mymensingh Town	76	38
Mymensingh	Mymensingh Sadar	Mymensingh Paurashava	Mymensingh Town	76	39
Mymensingh	Mymensingh Sadar	Mymensingh Paurashava	Mymensingh Town	76	40
Mymensingh	Mymensingh Sadar	Mymensingh Paurashava	Mymensingh Town	76	41

Final Report on *Supplying of Digitized Mouza Maps of MSDP (2011-2031) project area (Hard & Soft copy) with necessary Geo-referencing by RTK GPS based Ground Control Point (GCP)*

Mymensingh	Mymensingh Sadar	Mymensingh Paurashava	Mymensingh Town	76	42
Mymensingh	Mymensingh Sadar	Mymensingh Paurashava	Mymensingh Town	76	43
Mymensingh	Mymensingh Sadar	Mymensingh Paurashava	Mymensingh Town	76	44
Mymensingh	Mymensingh Sadar	Mymensingh Paurashava	Mymensingh Town	76	45
Mymensingh	Mymensingh Sadar	Mymensingh Paurashava	Mymensingh Town	76	46
Mymensingh	Mymensingh Sadar	Mymensingh Paurashava	Mymensingh Town	76	47
Mymensingh	Mymensingh Sadar	Mymensingh Paurashava	Mymensingh Town	76	48
Mymensingh	Mymensingh Sadar	Mymensingh Paurashava	Mymensingh Town	76	48
Mymensingh	Mymensingh Sadar	Mymensingh Paurashava	Mymensingh Town	76	49
Mymensingh	Mymensingh Sadar	Mymensingh Paurashava	Mymensingh Town	76	49
Mymensingh	Mymensingh Sadar	Mymensingh Paurashava	Char Shehra	77	0
Mymensingh	Mymensingh Sadar	Mymensingh Paurashava	Chalkchatrapur	95	2
Mymensingh	Mymensingh Sadar	Mymensingh Paurashava	Chalkchatrapur	95	1
Mymensingh	Mymensingh Sadar	Mymensingh Paurashava	Rakta	96	5
Mymensingh	Mymensingh Sadar	Mymensingh Paurashava	Chatrapur	97	43

Final Report on *Supplying of Digitized Mouza Maps of MSDP (2011-2031) project area (Hard & Soft copy) with necessary Geo-referencing by RTK GPS based Ground Control Point (GCP)*

Mymensingh	Mymensingh Sadar	Mymensingh Paurashava	Chatrapur	97	42
Mymensingh	Mymensingh Sadar	Mymensingh Paurashava	Chatrapur	97	41
Mymensingh	Mymensingh Sadar	Mymensingh Paurashava	Chatrapur	97	33
Mymensingh	Mymensingh Sadar	Mymensingh Paurashava	Chatrapur	97	32
Mymensingh	Mymensingh Sadar	Mymensingh Paurashava	Kayetkhali	98	23
Mymensingh	Mymensingh Sadar	Mymensingh Paurashava	Kayetkhali	98	11
Mymensingh	Mymensingh Sadar	Mymensingh Paurashava	Kayetkhali	98	10
Mymensingh	Mymensingh Sadar	Mymensingh Paurashava	Kayetkhali	98	2
Mymensingh	Mymensingh Sadar	Mymensingh Paurashava	Kayetkhali	98	1
Mymensingh	Mymensingh Sadar	Mymensingh Paurashava	Balashpur	99	10
Mymensingh	Mymensingh Sadar	Mymensingh Paurashava	Balashpur	99	9
Mymensingh	Mymensingh Sadar	Mymensingh Paurashava	Balashpur	99	8
Mymensingh	Mymensingh Sadar	Mymensingh Paurashava	Balashpur	99	5
Mymensingh	Mymensingh Sadar	Mymensingh Paurashava	Balashpur	99	2
Mymensingh	Mymensingh Sadar	Mymensingh Paurashava	Krishnapur	100	1

Final Report on *Supplying of Digitized Mouza Maps of MSDP (2011-2031) project area (Hard & Soft copy) with necessary Geo-referencing by RTK GPS based Ground Control Point (GCP)*

Mymensingh	Mymensingh Sadar	Mymensingh Paurashava	Krishnapur	100	2
Mymensingh	Mymensingh Sadar	Mymensingh Paurashava	Krishnapur	100	6
Mymensingh	Mymensingh Sadar	Mymensingh Paurashava	Krishnapur	100	3
Mymensingh	Mymensingh Sadar	Mymensingh Paurashava	Vatikashor	101	1
Mymensingh	Mymensingh Sadar	Mymensingh Paurashava	Vatikashor	101	4
Mymensingh	Mymensingh Sadar	Mymensingh Paurashava	Vatikashor	101	5
Mymensingh	Mymensingh Sadar	Mymensingh Paurashava	Vatikashor	101	6
Mymensingh	Mymensingh Sadar	Mymensingh Paurashava	Shehra	102	3
Mymensingh	Mymensingh Sadar	Mymensingh Paurashava	Shehra	102	4
Mymensingh	Mymensingh Sadar	Mymensingh Paurashava	Shehra	102	5
Mymensingh	Mymensingh Sadar	Mymensingh Paurashava	Shehra	102	6
Mymensingh	Mymensingh Sadar	Mymensingh Paurashava	Shehra	102	7
Mymensingh	Mymensingh Sadar	Mymensingh Paurashava	Shehra	102	10
Mymensingh	Mymensingh Sadar	Mymensingh Paurashava	Maskanda	103	12

DISTRICT	THANA_NAME	UNION_NAME	MAUZA_NAME	JL_NO	SHEET_NO
Mymensingh	Mymensingh Sadar	Akua	Akua	104	53
Mymensingh	Mymensingh Sadar	Akua	Akua	104	52
Mymensingh	Mymensingh Sadar	Akua	Akua	104	50
Mymensingh	Mymensingh	Akua	AKUA	104	49
Mymensingh	Mymensingh	Akua	AKUA	104	45
Mymensingh	Mymensingh	Akua	AKUA	104	44
Mymensingh	Mymensingh	Akua	Akua	104	42
Mymensingh	Mymensingh	Akua	AKUA	104	40
Mymensingh	Mymensingh	Akua	AKUA	104	41
Mymensingh	Mymensingh Sadar	Akua	Akua	104	39
Mymensingh	Mymensingh Sadar	Akua	Akua	104	38
Mymensingh	Mymensingh Sadar	Akua	Akua	104	37
Mymensingh	Mymensingh	Akua	AKUA	104	36
Mymensingh	Mymensingh	Akua	AKUA	104	35
Mymensingh	Mymensingh	Akua	AKUA	104	32
Mymensingh	Mymensingh	Akua	AKUA	104	31
Mymensingh	Mymensingh	Akua	AKUA	104	30
Mymensingh	Mymensingh	Akua	AKUA	104	29

Final Report on *Supplying of Digitized Mouza Maps of MSDP (2011-2031) project area (Hard & Soft copy) with necessary Geo-referencing by RTK GPS based Ground Control Point (GCP)*

Mymensingh	Mymensingh	Akua	AKUA	104	28
Mymensingh	Mymensingh	Akua	AKUA	104	27
Mymensingh	Mymensingh	Akua	AKUA	104	26
Mymensingh	Mymensingh	Akua	AKUA	104	25
Mymensingh	Mymensingh	Akua	AKUA	104	24
Mymensingh	Mymensingh	Akua	AKUA	104	23
Mymensingh	Mymensingh Sadar	Akua	Akua	104	12
Mymensingh	Mymensingh Sadar	Akua	Akua	104	11
Mymensingh	Mymensingh Sadar	Akua	Barera	107	5
Mymensingh	Mymensingh Sadar	Akua	Barera	107	3
Mymensingh	Mymensingh Sadar	Akua	Barera	107	2
Mymensingh	Mymensingh Sadar	Akua	Barera	107	1
DISTRICT	THANA_NAME	UNION_NAME	MAUZA_NAME	JL_NO	SHEET_NO
Mymensingh	Mymensingh Sadar	Baera Bhaluka	Baera Bhaluka	94	2
DISTRICT	THANA_NAME	UNION_NAME	MAUZA_NAME	JL_NO	SHEET_NO
Mymensingh	Mymensingh Sadar	Bhabkhali	Unerpar	129	1
Mymensingh	Mymensingh Sadar	Bhabkhali	Panghagra	121	0

Final Report on *Supplying of Digitized Mouza Maps of MSDP (2011-2031) project area (Hard & Soft copy) with necessary Geo-referencing by RTK GPS based Ground Control Point (GCP)*

Mymensingh	Mymensingh Sadar	Bhabkhali	Charkhai	128	3
Mymensingh	Mymensingh Sadar	Bhabkhali	Charkhai	128	2
Mymensingh	Mymensingh Sadar	Bhabkhali	Charkhai	128	1
Mymensingh	Mymensingh Sadar	Bhabkhali	Bara Baliarpar	123	2
DISTRICT	THANA_NAME	UNION_NAME	MAUZA_NAME	JL_NO	SHEET_NO
Mymensingh	Ishwarganj	Bhangnamari	Bhangnamari	131	4
Mymensingh	Gauripur	Bhangnamari	Bhanganmari	131	6
Mymensingh	Gauripur	Bhangnamari	Bhanganmari	131	3
Mymensingh	Gauripur	Bhangnamari	Bhanganmari	131	1
Mymensingh	Mymensingh Sadar	Char Ishwardia	Lakshmpur	79	2
Mymensingh	Mymensingh Sadar	Char Ishwardia	Char Ishwardia	78	5
Mymensingh	Mymensingh Sadar	Char Ishwardia	Char Ishwardia	78	4
Mymensingh	Mymensingh Sadar	Char Ishwardia	Char Ishwardia	78	2
Mymensingh	Mymensingh Sadar	Char Ishwardia	Char Haripur	80	3
DISTRICT	THANA_NAME	UNION_NAME	MAUZA_NAME	JL_NO	SHEET_NO
Mymensingh	Mymensingh Sadar	Char Nilakshmia	Raghobpur	89	3

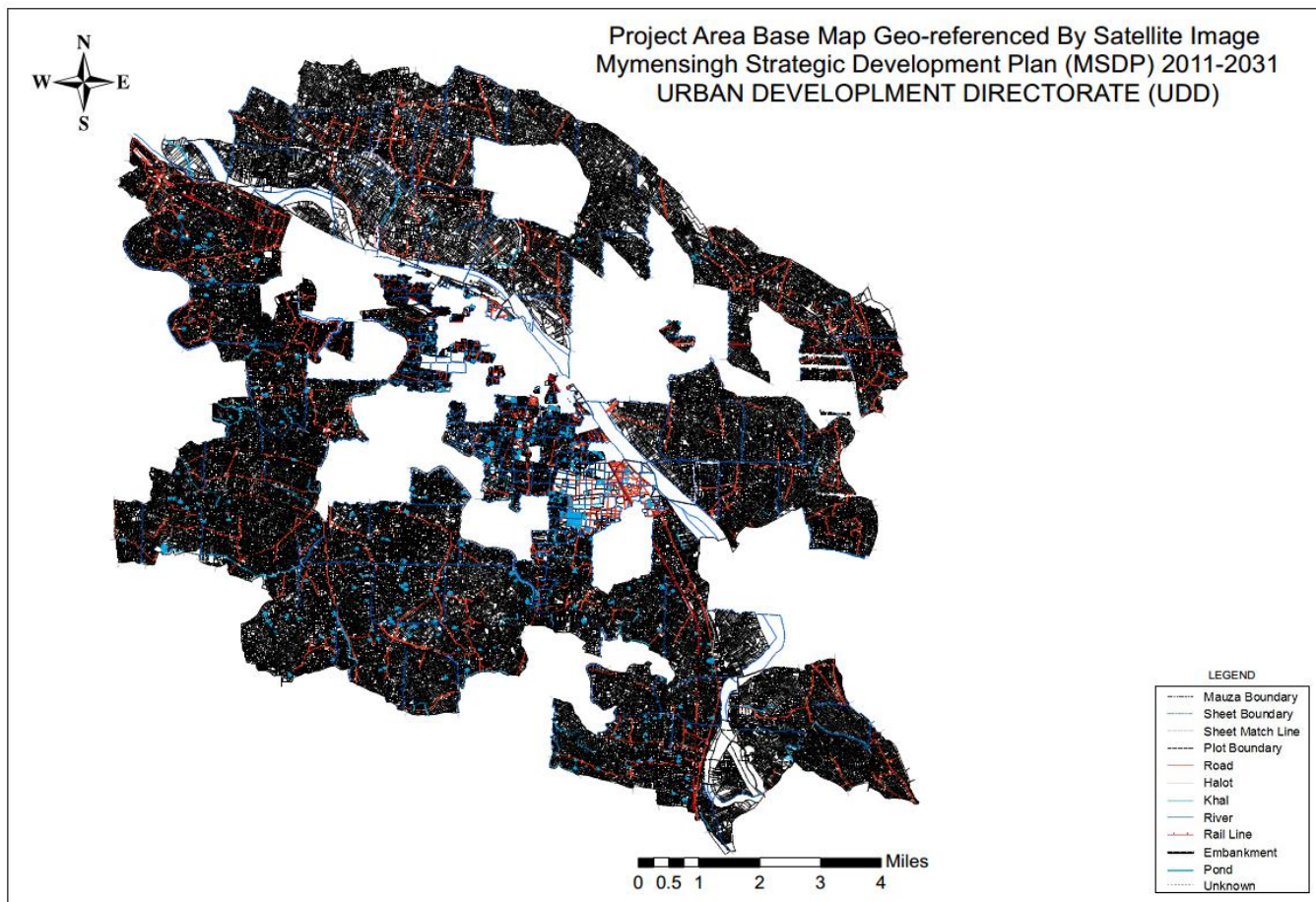
Final Report on *Supplying of Digitized Mouza Maps of MSDP (2011-2031) project area (Hard & Soft copy) with necessary Geo-referencing by RTK GPS based Ground Control Point (GCP)*

Mymensingh	Mymensingh Sadar	Char Nilakshmia	Rajaganj	90	0
Mymensingh	Mymensingh Sadar	Char Nilakshmia	Raghabpur	89	1
Mymensingh	Mymensingh Sadar	Char Nilakshmia	Phaliamarirchar	92	0
Mymensingh	Mymensingh Sadar	Char Nilakshmia	Char Raghurampur	81	2
Mymensingh	Mymensingh Sadar	Char Nilakshmia	Char Raghurampur	81	1
Mymensingh	Mymensingh Sadar	Char Nilakshmia	Char Raghurampur	81	5
DISTRICT	THANA_NAME	UNION_NAME	MAUZA_NAME	JL_NO	SHEET_NO
Mymensingh	Mymensingh Sadar	Dapunia	Dapunia	106	4
Mymensingh	Mymensingh Sadar	Dapunia	Sasyamala	109	3
Mymensingh	Mymensingh Sadar	Dapunia	Dapunia	106	2
Mymensingh	Mymensingh Sadar	Dapunia	Badekalpa	105	2
DISTRICT	THANA_NAME	UNION_NAME	MAUZA_NAME	JL_NO	SHEET_NO
Mymensingh	Mymensingh Sadar	Ghagra	Ghagra	108	1

DISTRICT	THANA_NAME	UNION_NAME	MAUZA_NAME	JL_NO	SHEET_NO
Mymensingh	Mymensingh Sadar	Khagdahar	Rahmatpur	67	0
Mymensingh	Mymensingh Sadar	Khagdahar	Khagdahar	70	3
Mymensingh	Mymensingh Sadar	Khagdahar	Khagdahar	70	2
Mymensingh	Mymensingh Sadar	Khagdahar	Khagdahar	70	1
DISTRICT	THANA_NAME	UNION_NAME	MAUZA_NAME	JL_NO	SHEET_NO
Mymensingh	Mymensingh Sadar	Sirta	Gobindapur	50	2
Mymensingh	Mymensingh Sadar	Sirta	Char Bhabanipur	48	4
Mymensingh	Mymensingh Sadar	Sirta	Char Bhabanipur	48	3

3.12.4 Geo-referenced by Satellite Image:

Rest 249 nos. of sheets has been over-ried and geo-referenced on the basis of geo-referenced Multispectral (4-band) Satellite Image (0.5 meter resolution) (GeoEye-1, image dates: 14/11/2013-25/11/2013, Digital Globe) and already geo-referenced Mauza maps stated on clause:-02 above. No rubber-sheeting or such kind of technique has been used in GIS platform while edge-matching and constructing integrated Mauza-mosaic base map for MSDP area. All those unmatched and over-lapped space in-between adjacent Mauza sheets marked separately and kept as it is in the index map



Project Area Base Map Geo-referenced By Satellite Image

List of Map Geo-referenced By Satellite Image:

DISTRICT	THANA_NAME	UNION_NAME	MAUZA_NAME	JL_NO	SHEET_NO
Mymensingh	Mymensingh Sadar	Akua	Akua	104	64
Mymensingh	Mymensingh Sadar	Akua	Akua	104	63
Mymensingh	Mymensingh	Akua	AKUA	104	62
Mymensingh	Mymensingh	Akua	AKUA	104	61

Final Report on *Supplying of Digitized Mouza Maps of MSDP (2011-2031) project area (Hard & Soft copy) with necessary Geo-referencing by RTK GPS based Ground Control Point (GCP)*

Mymensingh	Mymensingh Sadar	Akua	Akua	104	60
Mymensingh	Mymensingh Sadar	Akua	Akua	104	59
Mymensingh	Mymensingh Sadar	Akua	Akua	104	58
Mymensingh	Mymensingh Sadar	Akua	Akua	104	57
Mymensingh	Mymensingh	Akua	AKUA	104	56
Mymensingh	Mymensingh Sadar	Akua	Akua	104	55
Mymensingh	Mymensingh Sadar	Akua	Akua	104	54
Mymensingh	Mymensingh	Akua	AKUA	104	51
Mymensingh	Mymensingh Sadar	Akua	Akua	104	48
Mymensingh	Mymensingh	Akua	AKUA	104	47
Mymensingh	Mymensingh	Akua	AKUA	104	46
Mymensingh	Mymensingh	Akua	AKUA	104	43
Mymensingh	Mymensingh Sadar	Akua	Akua	104	34
Mymensingh	Mymensingh	Akua	AKUA	104	33
Mymensingh	Mymensingh	Akua	AKUA	104	22
Mymensingh	Mymensingh	Akua	AKUA	104	21
Mymensingh	Mymensingh	Akua	AKUA	104	20
Mymensingh	Mymensingh	Akua	AKUA	104	19
Mymensingh	Mymensingh	Akua	AKUA	104	18

Final Report on *Supplying of Digitized Mouza Maps of MSDP (2011-2031) project area (Hard & Soft copy) with necessary Geo-referencing by RTK GPS based Ground Control Point (GCP)*

Mymensingh	Mymensingh	Akua	AKUA	104	17
Mymensingh	Mymensingh Sadar	Akua	Akua	104	16
Mymensingh	Mymensingh Sadar	Akua	Akua	104	15
Mymensingh	Mymensingh Sadar	Akua	Akua	104	14
Mymensingh	Mymensingh Sadar	Akua	Akua	104	13
Mymensingh	Mymensingh Sadar	Akua	Akua	104	10
Mymensingh	Mymensingh Sadar	Akua	Akua	104	9
Mymensingh	Mymensingh Sadar	Akua	Akua	104	8
Mymensingh	Mymensingh Sadar	Akua	Akua	104	7
Mymensingh	Mymensingh Sadar	Akua	Akua	104	6
Mymensingh	Mymensingh Sadar	Akua	Akua	104	5
Mymensingh	Mymensingh Sadar	Akua	Akua	104	4
Mymensingh	Mymensingh Sadar	Akua	Akua	104	3
Mymensingh	Mymensingh Sadar	Akua	Akua	104	2
Mymensingh	Mymensingh Sadar	Akua	Akua	104	1
Mymensingh	Mymensingh	Akua	Barera	107	6

Final Report on *Supplying of Digitized Mouza Maps of MSDP (2011-2031) project area (Hard & Soft copy) with necessary Geo-referencing by RTK GPS based Ground Control Point (GCP)*

	Sadar				
Mymensingh	Mymensingh Sadar	Akua	Barera	107	4
Mymensingh	Mymensingh Sadar	Baera Bhaluka	Baera Bhaluka	94	3
Mymensingh	Mymensingh Sadar	Baera Bhaluka	Baera Bhaluka	94	1
Mymensingh	Mymensingh Sadar	Bhabkhali	Unerpar	129	2
Mymensingh	Mymensingh Sadar	Bhabkhali	Sutiakhali	125	2
Mymensingh	Mymensingh Sadar	Bhabkhali	Sutiakhali	125	1
Mymensingh	Mymensingh Sadar	Bhabkhali	Nehaliakanda	130	0
Mymensingh	Mymensingh Sadar	Bhabkhali	Narayanpur	132	0
Mymensingh	Mymensingh Sadar	Bhabkhali	Madal	122	0
Mymensingh	Mymensingh Sadar	Bhabkhali	Dari Bhabkhali	126	2
Mymensingh	Mymensingh Sadar	Bhabkhali	Dari Bhabkhali	126	1
Mymensingh	Mymensingh Sadar	Bhabkhali	Char Amian	0	0
Mymensingh	Mymensingh Sadar	Bhabkhali	Chalkbanpathalia	131	0
Mymensingh	Mymensingh Sadar	Bhabkhali	Chalkbanpathalia	131	0
Mymensingh	Mymensingh	Bhabkhali	Bhabkhali	127	4

Final Report on *Supplying of Digitized Mouza Maps of MSDP (2011-2031) project area (Hard & Soft copy) with necessary Geo-referencing by RTK GPS based Ground Control Point (GCP)*

	Sadar				
Mymensingh	Mymensingh Sadar	Bhabkhali	Bhabkhali	127	3
Mymensingh	Mymensingh Sadar	Bhabkhali	Bhabkhali	127	2
Mymensingh	Mymensingh Sadar	Bhabkhali	Bhabkhali	127	1
Mymensingh	Mymensingh Sadar	Bhabkhali	Beltali	124	0
Mymensingh	Mymensingh Sadar	Bhabkhali	Bara Baliarpar	123	1
DISTRICT	THANA_NAME	UNION_NAME	MAUZA_NAME	JL_NO	SHEET_NO
Mymensingh	Gauripur	Bhangnamari	Volaralgi	30	0
Mymensingh	Gauripur	Bhangnamari	Nawbhanga	31	3
Mymensingh	Gauripur	Bhangnamari	Nawbhanga	31	2
Mymensingh	Gauripur	Bhangnamari	Nawbhanga	31	1
Mymensingh	Ishwarganj	Bhangnamari	Khoda Baksapur	32	2
Mymensingh	Ishwarganj	Bhangnamari	Khoda Baksapur	32	1
Mymensingh	Ishwarganj	Bhangnamari	Khoda Baksapur	32	1
Mymensingh	Gauripur	Bhangnamari	Char Bhabkhali	33	2
Mymensingh	Gauripur	Bhangnamari	Char Bhabkhali	33	1
Mymensingh	Gauripur	Bhangnamari	Bhanganmari	131	5
Mymensingh	Gauripur	Bhangnamari	Bhanganmari	131	2

Final Report on *Supplying of Digitized Mouza Maps of MSDP (2011-2031) project area (Hard & Soft copy) with necessary Geo-referencing by RTK GPS based Ground Control Point (GCP)*

DISTRICT	THANA_NAME	UNION_NAME	MAUZA_NAME	JL_NO	SHEET_NO
Mymensingh	Mymensingh Sadar	Char Ishwardia	Lakshmipur	79	1
Mymensingh	Mymensingh Sadar	Char Ishwardia	Char Barobila	47	1
Mymensingh	Mymensingh Sadar	Char Ishwardia	Char Barobila	47	2
Mymensingh	Mymensingh Sadar	Char Ishwardia	Char Ishwardia	78	8
Mymensingh	Mymensingh Sadar	Char Ishwardia	Char Ishwardia	78	7
Mymensingh	Mymensingh Sadar	Char Ishwardia	Char Ishwardia	78	6
Mymensingh	Mymensingh Sadar	Char Ishwardia	Char Ishwardia	78	3
Mymensingh	Mymensingh Sadar	Char Ishwardia	Char Ishwardia	78	1
Mymensingh	Mymensingh Sadar	Char Ishwardia	Char Haripur	80	2
Mymensingh	Mymensingh Sadar	Char Ishwardia	Char Haripur	80	1
DISTRICT	THANA_NAME	UNION_NAME	MAUZA_NAME	JL_NO	SHEET_NO
Mymensingh	Mymensingh Sadar	Char Nilakshmia	Shahbajpur	83	0
Mymensingh	Mymensingh Sadar	Char Nilakshmia	Rashidpur	84	0

Final Report on *Supplying of Digitized Mouza Maps of MSDP (2011-2031) project area (Hard & Soft copy) with necessary Geo-referencing by RTK GPS based Ground Control Point (GCP)*

Mymensingh	Mymensingh Sadar	Char Nilakshmia	Rajaganj	90	0
Mymensingh	Mymensingh Sadar	Char Nilakshmia	Raghabpur	89	2
Mymensingh	Mymensingh Sadar	Char Nilakshmia	Phaliamarirchar	92	0
Mymensingh	Mymensingh Sadar	Char Nilakshmia	Modarpur	85	0
Mymensingh	Mymensingh Sadar	Char Nilakshmia	Mahazzampur	87	2
Mymensingh	Mymensingh Sadar	Char Nilakshmia	Mahazzampur	87	1
Mymensingh	Mymensingh Sadar	Char Nilakshmia	Durlabharchar	86	0
Mymensingh	Mymensingh Sadar	Char Nilakshmia	Char Raghurampur	81	6
Mymensingh	Mymensingh Sadar	Char Nilakshmia	Char Raghurampur	81	3
Mymensingh	Mymensingh Sadar	Char Nilakshmia	Char Raghurampur	81	4
Mymensingh	Mymensingh Sadar	Char Nilakshmia	Char Nilakshmia	93	6
Mymensingh	Mymensingh Sadar	Char Nilakshmia	Char Nilakshmia	93	5
Mymensingh	Mymensingh Sadar	Char Nilakshmia	Char Nilakshmia	93	4
Mymensingh	Mymensingh Sadar	Char Nilakshmia	Char Nilakshmia	93	3
Mymensingh	Mymensingh Sadar	Char Nilakshmia	Char Nilakshmia	93	2

Final Report on *Supplying of Digitized Mouza Maps of MSDP (2011-2031) project area (Hard & Soft copy) with necessary Geo-referencing by RTK GPS based Ground Control Point (GCP)*

Mymensingh	Mymensingh Sadar	Char Nilakshmia	Char Nilakshmia	93	1
Mymensingh	Mymensingh Sadar	Char Nilakshmia	Char Ghoramara	91	0
Mymensingh	Mymensingh Sadar	Char Nilakshmia	Bijoyagar	88	0
Mymensingh	Mymensingh Sadar	Char Nilakshmia	Bajitpur	82	0
DISTRICT	THANA_NAME	UNION_NAME	MAUZA_NAME	JL_NO	SHEET_NO
Mymensingh	Mymensingh Sadar	Dapunia	Haritti	65	0
Mymensingh	Mymensingh Sadar	Dapunia	Talma	112	0
Mymensingh	Mymensingh Sadar	Dapunia	Sasyamala	109	2
Mymensingh	Mymensingh Sadar	Dapunia	Sasyamala	109	1
Mymensingh	Mymensingh Sadar	Dapunia	Phulbaria	111	0
Mymensingh	Mymensingh Sadar	Dapunia	Panchkahania	114	0
Mymensingh	Mymensingh Sadar	Dapunia	Kawalti	116	0
Mymensingh	Mymensingh Sadar	Dapunia	Katlasen	113	3
Mymensingh	Mymensingh Sadar	Dapunia	Katlasen	113	2

Final Report on *Supplying of Digitized Mouza Maps of MSDP (2011-2031) project area (Hard & Soft copy) with necessary Geo-referencing by RTK GPS based Ground Control Point (GCP)*

Mymensingh	Mymensingh Sadar	Dapunia	Katlasen	113	1
Mymensingh	Mymensingh Sadar	Dapunia	Gosta	110	3
Mymensingh	Mymensingh Sadar	Dapunia	Gosta	110	2
Mymensingh	Mymensingh Sadar	Dapunia	Gosta	110	1
Mymensingh	Mymensingh Sadar	Dapunia	Dapunia	106	3
Mymensingh	Mymensingh Sadar	Dapunia	Dapunia	106	1
Mymensingh	Mymensingh Sadar	Dapunia	Baruri	115	0
Mymensingh	Mymensingh Sadar	Dapunia	Badekalpa	105	1
Mymensingh	Mymensingh Sadar	Dapunia	Azmatpur	66	2
Mymensingh	Mymensingh Sadar	Dapunia	Azmatpur	66	1
Mymensingh	Mymensingh Sadar	Ghagra	Suhila	117	3
Mymensingh	Mymensingh Sadar	Ghagra	Suhila	117	2
Mymensingh	Mymensingh Sadar	Ghagra	Suhila	117	1
Mymensingh	Mymensingh Sadar	Ghagra	Parail	120	2
Mymensingh	Mymensingh Sadar	Ghagra	Parail	120	1

Final Report on *Supplying of Digitized Mouza Maps of MSDP (2011-2031) project area (Hard & Soft copy) with necessary Geo-referencing by RTK GPS based Ground Control Point (GCP)*

Mymensingh	Mymensingh Sadar	Ghagra	Maijhati	118	0
Mymensingh	Mymensingh Sadar	Ghagra	Gopalnagar	119	2
Mymensingh	Mymensingh Sadar	Ghagra	Gopalnagar	119	1
Mymensingh	Mymensingh Sadar	Ghagra	Ghagra	108	9
Mymensingh	Mymensingh Sadar	Ghagra	Ghagra	108	8
Mymensingh	Mymensingh Sadar	Ghagra	Ghagra	108	7
Mymensingh	Mymensingh Sadar	Ghagra	Ghagra	108	6
Mymensingh	Mymensingh Sadar	Ghagra	Ghagra	108	5
Mymensingh	Mymensingh Sadar	Ghagra	Ghagra	108	4
Mymensingh	Mymensingh Sadar	Ghagra	Ghagra	108	3
Mymensingh	Mymensingh Sadar	Ghagra	Ghagra	108	2
DISTRICT	THANA_NAME	UNION_NAME	MAUZA_NAME	JL_NO	SHEET_NO
Mymensingh	Mymensingh Sadar	Khagdahar	Kalikapur	68	0
Mymensingh	Mymensingh Sadar	Khagdahar	Taragai	54	0
Mymensingh	Mymensingh Sadar	Khagdahar	Swalpoborian	56	0

Final Report on *Supplying of Digitized Mouza Maps of MSDP (2011-2031) project area (Hard & Soft copy) with necessary Geo-referencing by RTK GPS based Ground Control Point (GCP)*

Mymensingh	Mymensingh Sadar	Khagdahar	Mirzapur	60	2
Mymensingh	Mymensingh Sadar	Khagdahar	Mirzapur	60	1
Mymensingh	Mymensingh Sadar	Khagdahar	Maijbari	63	2
Mymensingh	Mymensingh Sadar	Khagdahar	Maijbari	63	1
Mymensingh	Mymensingh Sadar	Khagdahar	Kismat	61	0
Mymensingh	Mymensingh Sadar	Khagdahar	Kaylanpur	55	0
Mymensingh	Mymensingh Sadar	Khagdahar	Kalpa	73	0
Mymensingh	Mymensingh Sadar	Khagdahar	Jelkhanar Char	52	6
Mymensingh	Mymensingh Sadar	Khagdahar	Jelkhanar Char	52	5
Mymensingh	Mymensingh Sadar	Khagdahar	Jelkhanar Char	52	4
Mymensingh	Mymensingh Sadar	Khagdahar	Jelkhanar Char	52	3
Mymensingh	Mymensingh Sadar	Khagdahar	Jelkhanar Char	52	2
Mymensingh	Mymensingh Sadar	Khagdahar	Jelkhanar Char	52	1
Mymensingh	Mymensingh Sadar	Khagdahar	Jelkhanar Char	52	0
Mymensingh	Mymensingh Sadar	Khagdahar	Jelkhanar Char	52	1

Final Report on *Supplying of Digitized Mouza Maps of MSDP (2011-2031) project area (Hard & Soft copy) with necessary Geo-referencing by RTK GPS based Ground Control Point (GCP)*

Mymensingh	Mymensingh Sadar	Khagdahar	Hasibasi	69	0
Mymensingh	Mymensingh Sadar	Khagdahar	Ghano Shyampur	64	0
Mymensingh	Mymensingh Sadar	Khagdahar	Dulalbari	53	2
Mymensingh	Mymensingh Sadar	Khagdahar	Dulalbari	53	1
Mymensingh	Mymensingh Sadar	Khagdahar	Chargobinda	57	0
Mymensingh	Mymensingh Sadar	Khagdahar	Baishakhi	62	0
Mymensingh	Mymensingh Sadar	Khagdahar	Bairan	58	0
Mymensingh	Mymensingh Sadar	Khagdahar	Bahadurpur	59	0
DISTRICT	THANA_NAME	UNION_NAME	MAUZA_NAME	JL_NO	SHEET_NO
Mymensingh	Mymensingh Sadar	Mymensingh Paurashava	Vatikashor	101	11
Mymensingh	Mymensingh Sadar	Mymensingh Paurashava	Vatikashor	101	10
Mymensingh	Mymensingh Sadar	Mymensingh Paurashava	Vatikashor	101	9
Mymensingh	Mymensingh Sadar	Mymensingh Paurashava	Vatikashor	101	8
Mymensingh	Mymensingh Sadar	Mymensingh Paurashava	Vatikashor	101	7
Mymensingh	Mymensingh	Mymensingh	Vatikashor	101	3

Final Report on *Supplying of Digitized Mouza Maps of MSDP (2011-2031) project area (Hard & Soft copy) with necessary Geo-referencing by RTK GPS based Ground Control Point (GCP)*

	Sadar	Paurashava			
Mymensingh	Mymensingh Sadar	Mymensingh Paurashava	Vatikashor	101	2
Mymensingh	Mymensingh Sadar	Mymensingh Paurashava	Vatikashor	101	1
Mymensingh	Mymensingh Sadar	Mymensingh Paurashava	Shehra	102	2
Mymensingh	Mymensingh Sadar	Mymensingh Paurashava	Shehra	102	1
Mymensingh	Mymensingh Sadar	Mymensingh Paurashava	Rakta	96	6
Mymensingh	Mymensingh Sadar	Mymensingh Paurashava	Rakta	96	4
Mymensingh	Mymensingh Sadar	Mymensingh Paurashava	Rakta	96	3
Mymensingh	Mymensingh Sadar	Mymensingh Paurashava	Rakta	96	2
Mymensingh	Mymensingh Sadar	Mymensingh Paurashava	Rakta	96	1
Mymensingh	Mymensingh Sadar	Mymensingh Paurashava	Mymensingh Town	76	10
Mymensingh	Mymensingh Sadar	Mymensingh Paurashava	Mymensingh Town	76	9
Mymensingh	Mymensingh Sadar	Mymensingh Paurashava	Mymensingh Town	76	9
Mymensingh	Mymensingh Sadar	Mymensingh Paurashava	Mymensingh Town	76	8
Mymensingh	Mymensingh Sadar	Mymensingh Paurashava	Mymensingh Town	76	7
Mymensingh	Mymensingh	Mymensingh	Mymensingh	76	6

Final Report on *Supplying of Digitized Mouza Maps of MSDP (2011-2031) project area (Hard & Soft copy) with necessary Geo-referencing by RTK GPS based Ground Control Point (GCP)*

	Sadar	Paurashava	Town		
Mymensingh	Mymensingh Sadar	Mymensingh Paurashava	Mymensingh Town	76	5
Mymensingh	Mymensingh Sadar	Mymensingh Paurashava	Mymensingh Town	76	2
Mymensingh	Mymensingh Sadar	Mymensingh Paurashava	Mymensingh Town	76	1
Mymensingh	Mymensingh Sadar	Mymensingh Paurashava	Mymensingh Town	76	25
Mymensingh	Mymensingh Sadar	Mymensingh Paurashava	Mymensingh Town	76	49
Mymensingh	Mymensingh Sadar	Mymensingh Paurashava	Mymensingh Town	76	48
Mymensingh	Mymensingh Sadar	Mymensingh Paurashava	Maskanda	103	1
Mymensingh	Mymensingh Sadar	Mymensingh Paurashava	Maskanda	103	2
Mymensingh	Mymensingh Sadar	Mymensingh Paurashava	Maskanda	103	3
Mymensingh	Mymensingh Sadar	Mymensingh Paurashava	Maskanda	103	4
Mymensingh	Mymensingh Sadar	Mymensingh Paurashava	Maskanda	103	5
Mymensingh	Mymensingh Sadar	Mymensingh Paurashava	Maskanda	103	6
Mymensingh	Mymensingh Sadar	Mymensingh Paurashava	Maskanda	103	7
Mymensingh	Mymensingh Sadar	Mymensingh Paurashava	Maskanda	103	8
Mymensingh	Mymensingh	Mymensingh	Maskanda	103	9

Final Report on *Supplying of Digitized Mouza Maps of MSDP (2011-2031) project area (Hard & Soft copy) with necessary Geo-referencing by RTK GPS based Ground Control Point (GCP)*

	Sadar	Paurashava			
Mymensingh	Mymensingh Sadar	Mymensingh Paurashava	Maskanda	103	10
Mymensingh	Mymensingh Sadar	Mymensingh Paurashava	Maskanda	103	11
Mymensingh	Mymensingh Sadar	Mymensingh Paurashava	Maskanda	103	12
Mymensingh	Mymensingh Sadar	Mymensingh Paurashava	Krishnapur	100	4
Mymensingh	Mymensingh Sadar	Mymensingh Paurashava	Kayetkhali	98	23
Mymensingh	Mymensingh Sadar	Mymensingh Paurashava	Kayetkhali	98	22
Mymensingh	Mymensingh Sadar	Mymensingh Paurashava	Kayetkhali	98	21
Mymensingh	Mymensingh Sadar	Mymensingh Paurashava	Kayetkhali	98	20
Mymensingh	Mymensingh Sadar	Mymensingh Paurashava	Kayetkhali	98	19
Mymensingh	Mymensingh Sadar	Mymensingh Paurashava	Kayetkhali	98	18
Mymensingh	Mymensingh Sadar	Mymensingh Paurashava	Kayetkhali	98	17
Mymensingh	Mymensingh Sadar	Mymensingh Paurashava	Kayetkhali	98	16
Mymensingh	Mymensingh Sadar	Mymensingh Paurashava	Kayetkhali	98	15
Mymensingh	Mymensingh Sadar	Mymensingh Paurashava	Kayetkhali	98	15
Mymensingh	Mymensingh	Mymensingh	Kayetkhali	98	14

Final Report on *Supplying of Digitized Mouza Maps of MSDP (2011-2031) project area (Hard & Soft copy) with necessary Geo-referencing by RTK GPS based Ground Control Point (GCP)*

	Sadar	Paurashava			
Mymensingh	Mymensingh Sadar	Mymensingh Paurashava	Kayetkhali	98	13
Mymensingh	Mymensingh Sadar	Mymensingh Paurashava	Kayetkhali	98	12
Mymensingh	Mymensingh Sadar	Mymensingh Paurashava	Kayetkhali	98	9
Mymensingh	Mymensingh Sadar	Mymensingh Paurashava	Kayetkhali	98	8
Mymensingh	Mymensingh Sadar	Mymensingh Paurashava	Kayetkhali	98	7
Mymensingh	Mymensingh Sadar	Mymensingh Paurashava	Kayetkhali	98	6
Mymensingh	Mymensingh Sadar	Mymensingh Paurashava	Kayetkhali	98	5
Mymensingh	Mymensingh Sadar	Mymensingh Paurashava	Kayetkhali	98	4
Mymensingh	Mymensingh Sadar	Mymensingh Paurashava	Kayetkhali	98	3
Mymensingh	Mymensingh Sadar	Mymensingh Paurashava	Kashor	75	10
Mymensingh	Mymensingh Sadar	Mymensingh Paurashava	Kashor	75	9
Mymensingh	Mymensingh Sadar	Mymensingh Paurashava	Kashor	75	8
Mymensingh	Mymensingh Sadar	Mymensingh Paurashava	Kashor	75	4
Mymensingh	Mymensingh Sadar	Mymensingh Paurashava	Kashor	75	3
Mymensingh	Mymensingh	Mymensingh	Kashor	75	2

Final Report on *Supplying of Digitized Mouza Maps of MSDP (2011-2031) project area (Hard & Soft copy) with necessary Geo-referencing by RTK GPS based Ground Control Point (GCP)*

	Sadar	Paurashava			
Mymensingh	Mymensingh Sadar	Mymensingh Paurashava	Kashor	75	1
Mymensingh	Mymensingh Sadar	Mymensingh Paurashava	Gologanda	72	10
Mymensingh	Mymensingh Sadar	Mymensingh Paurashava	Gologanda	72	9
Mymensingh	Mymensingh Sadar	Mymensingh Paurashava	Gologanda	72	8
Mymensingh	Mymensingh Sadar	Mymensingh Paurashava	Gologanda	72	7
Mymensingh	Mymensingh Sadar	Mymensingh Paurashava	Gologanda	72	6
Mymensingh	Mymensingh Sadar	Mymensingh Paurashava	Gologanda	72	5
Mymensingh	Mymensingh Sadar	Mymensingh Paurashava	Gologanda	72	3
Mymensingh	Mymensingh Sadar	Mymensingh Paurashava	Gologanda	72	1
Mymensingh	Mymensingh Sadar	Mymensingh Paurashava	Gohalkandi	74	11
Mymensingh	Mymensingh Sadar	Mymensingh Paurashava	Gohalkandi	74	10
Mymensingh	Mymensingh Sadar	Mymensingh Paurashava	Gohalkandi	74	9
Mymensingh	Mymensingh Sadar	Mymensingh Paurashava	Gohalkandi	74	8
Mymensingh	Mymensingh Sadar	Mymensingh Paurashava	Gohalkandi	74	7
Mymensingh	Mymensingh	Mymensingh	Gohalkandi	74	6

Final Report on *Supplying of Digitized Mouza Maps of MSDP (2011-2031) project area (Hard & Soft copy) with necessary Geo-referencing by RTK GPS based Ground Control Point (GCP)*

	Sadar	Paurashava			
Mymensingh	Mymensingh Sadar	Mymensingh Paurashava	Gohalkandi	74	1
Mymensingh	Mymensingh Sadar	Mymensingh Paurashava	Gohalkandi	74	3
Mymensingh	Mymensingh Sadar	Mymensingh Paurashava	Dholadia	71	14
Mymensingh	Mymensingh Sadar	Mymensingh Paurashava	Dholadia	71	13
Mymensingh	Mymensingh Sadar	Mymensingh Paurashava	Dholadia	71	12
Mymensingh	Mymensingh Sadar	Mymensingh Paurashava	Dholadia	71	11
Mymensingh	Mymensingh Sadar	Mymensingh Paurashava	Dholadia	71	10
Mymensingh	Mymensingh Sadar	Mymensingh Paurashava	Dholadia	71	4
Mymensingh	Mymensingh Sadar	Mymensingh Paurashava	Chatrapur	97	30
Mymensingh	Mymensingh Sadar	Mymensingh Paurashava	Chatrapur	97	29
Mymensingh	Mymensingh Sadar	Mymensingh Paurashava	Chatrapur	97	28
Mymensingh	Mymensingh Sadar	Mymensingh Paurashava	Chatrapur	97	27
Mymensingh	Mymensingh Sadar	Mymensingh Paurashava	Chatrapur	97	26
Mymensingh	Mymensingh Sadar	Mymensingh Paurashava	Chatrapur	97	25
Mymensingh	Mymensingh	Mymensingh	Chatrapur	97	24

Final Report on *Supplying of Digitized Mouza Maps of MSDP (2011-2031) project area (Hard & Soft copy) with necessary Geo-referencing by RTK GPS based Ground Control Point (GCP)*

	Sadar	Paurashava			
Mymensingh	Mymensingh Sadar	Mymensingh Paurashava	Chatrapur	97	23
Mymensingh	Mymensingh Sadar	Mymensingh Paurashava	Chatrapur	97	22
Mymensingh	Mymensingh Sadar	Mymensingh Paurashava	Chatrapur	97	21
Mymensingh	Mymensingh Sadar	Mymensingh Paurashava	Chatrapur	97	20
Mymensingh	Mymensingh Sadar	Mymensingh Paurashava	Chatrapur	97	19
Mymensingh	Mymensingh Sadar	Mymensingh Paurashava	Chatrapur	97	18
Mymensingh	Mymensingh Sadar	Mymensingh Paurashava	Chatrapur	97	17
Mymensingh	Mymensingh Sadar	Mymensingh Paurashava	Chatrapur	97	16
Mymensingh	Mymensingh Sadar	Mymensingh Paurashava	Chatrapur	97	15
Mymensingh	Mymensingh Sadar	Mymensingh Paurashava	Chatrapur	97	14
Mymensingh	Mymensingh Sadar	Mymensingh Paurashava	Chatrapur	97	13
Mymensingh	Mymensingh Sadar	Mymensingh Paurashava	Chatrapur	97	12
Mymensingh	Mymensingh Sadar	Mymensingh Paurashava	Chatrapur	97	11
Mymensingh	Mymensingh Sadar	Mymensingh Paurashava	Chatrapur	97	10
Mymensingh	Mymensingh	Mymensingh	Chatrapur	97	9

Final Report on *Supplying of Digitized Mouza Maps of MSDP (2011-2031) project area (Hard & Soft copy) with necessary Geo-referencing by RTK GPS based Ground Control Point (GCP)*

	Sadar	Paurashava			
Mymensingh	Mymensingh Sadar	Mymensingh Paurashava	Chatrapur	97	8
Mymensingh	Mymensingh Sadar	Mymensingh Paurashava	Chatrapur	97	7
Mymensingh	Mymensingh Sadar	Mymensingh Paurashava	Chatrapur	97	6
Mymensingh	Mymensingh Sadar	Mymensingh Paurashava	Chatrapur	97	5
Mymensingh	Mymensingh Sadar	Mymensingh Paurashava	Chatrapur	97	4
Mymensingh	Mymensingh Sadar	Mymensingh Paurashava	Chatrapur	97	3
Mymensingh	Mymensingh Sadar	Mymensingh Paurashava	Chatrapur	97	2
Mymensingh	Mymensingh Sadar	Mymensingh Paurashava	Chatrapur	97	1
Mymensingh	Mymensingh Sadar	Mymensingh Paurashava	Chalkchatrapur	95	5
Mymensingh	Mymensingh Sadar	Mymensingh Paurashava	Chalkchatrapur	95	4
Mymensingh	Mymensingh Sadar	Mymensingh Paurashava	Chalkchatrapur	95	3
Mymensingh	Mymensingh Sadar	Mymensingh Paurashava	Balashpur	99	16
Mymensingh	Mymensingh Sadar	Mymensingh Paurashava	Balashpur	99	15
Mymensingh	Mymensingh Sadar	Mymensingh Paurashava	Balashpur	99	14
Mymensingh	Mymensingh	Mymensingh	Balashpur	99	13

Final Report on *Supplying of Digitized Mouza Maps of MSDP (2011-2031) project area (Hard & Soft copy) with necessary Geo-referencing by RTK GPS based Ground Control Point (GCP)*

	Sadar	Paurashava			
Mymensingh	Mymensingh Sadar	Mymensingh Paurashava	Balashpur	99	12
Mymensingh	Mymensingh Sadar	Mymensingh Paurashava	Balashpur	99	11
Mymensingh	Mymensingh Sadar	Mymensingh Paurashava	Balashpur	99	7
Mymensingh	Mymensingh Sadar	Mymensingh Paurashava	Balashpur	99	6
Mymensingh	Mymensingh Sadar	Mymensingh Paurashava	Balashpur	99	4
Mymensingh	Mymensingh Sadar	Mymensingh Paurashava	Balashpur	99	3
Mymensingh	Mymensingh Sadar	Mymensingh Paurashava	Balashpur	99	2
Mymensingh	Mymensingh Sadar	Mymensingh Paurashava	Balashpur	99	1
Mymensingh	Mymensingh Sadar	Mymensingh Paurashava	Chalk Chatrapur	95	6
Mymensingh	Mymensingh Sadar	Mymensingh Paurashava	Chatrapur	97	62
Mymensingh	Mymensingh Sadar	Mymensingh Paurashava	Chatrapur	97	61
Mymensingh	Mymensingh Sadar	Mymensingh Paurashava	Chatrapur	97	60
Mymensingh	Mymensingh Sadar	Mymensingh Paurashava	Chatrapur	97	59
Mymensingh	Mymensingh Sadar	Mymensingh Paurashava	Chatrapur	97	58
Mymensingh	Mymensingh	Mymensingh	Chatrapur	97	57

Final Report on *Supplying of Digitized Mouza Maps of MSDP (2011-2031) project area (Hard & Soft copy) with necessary Geo-referencing by RTK GPS based Ground Control Point (GCP)*

	Sadar	Paurashava			
Mymensingh	Mymensingh Sadar	Mymensingh Paurashava	Chatrapur	56	0
Mymensingh	Mymensingh Sadar	Mymensingh Paurashava	Chatrapur	97	55
Mymensingh	Mymensingh Sadar	Mymensingh Paurashava	Chatrapur	97	54
Mymensingh	Mymensingh Sadar	Mymensingh Paurashava	Chatrapur	97	53
Mymensingh	Mymensingh Sadar	Mymensingh Paurashava	Chatrapur	97	53
Mymensingh	Mymensingh Sadar	Mymensingh Paurashava	Chatrapur	97	52
Mymensingh	Mymensingh Sadar	Mymensingh Paurashava	Chatrapur	97	51
Mymensingh	Mymensingh Sadar	Mymensingh Paurashava	Chatrapur	97	50
Mymensingh	Mymensingh Sadar	Mymensingh Paurashava	Chatrapur	97	49
Mymensingh	Mymensingh Sadar	Mymensingh Paurashava	Chatrapur	97	48
Mymensingh	Mymensingh Sadar	Mymensingh Paurashava	Chatrapur	97	47
Mymensingh	Mymensingh Sadar	Mymensingh Paurashava	Chatrapur	97	46
Mymensingh	Mymensingh Sadar	Mymensingh Paurashava	Chatrapur	97	0
Mymensingh	Mymensingh Sadar	Mymensingh Paurashava	Chatrapur	97	44
Mymensingh	Mymensingh	Mymensingh	Chatrapur	97	40

Final Report on *Supplying of Digitized Mouza Maps of MSDP (2011-2031) project area (Hard & Soft copy) with necessary Geo-referencing by RTK GPS based Ground Control Point (GCP)*

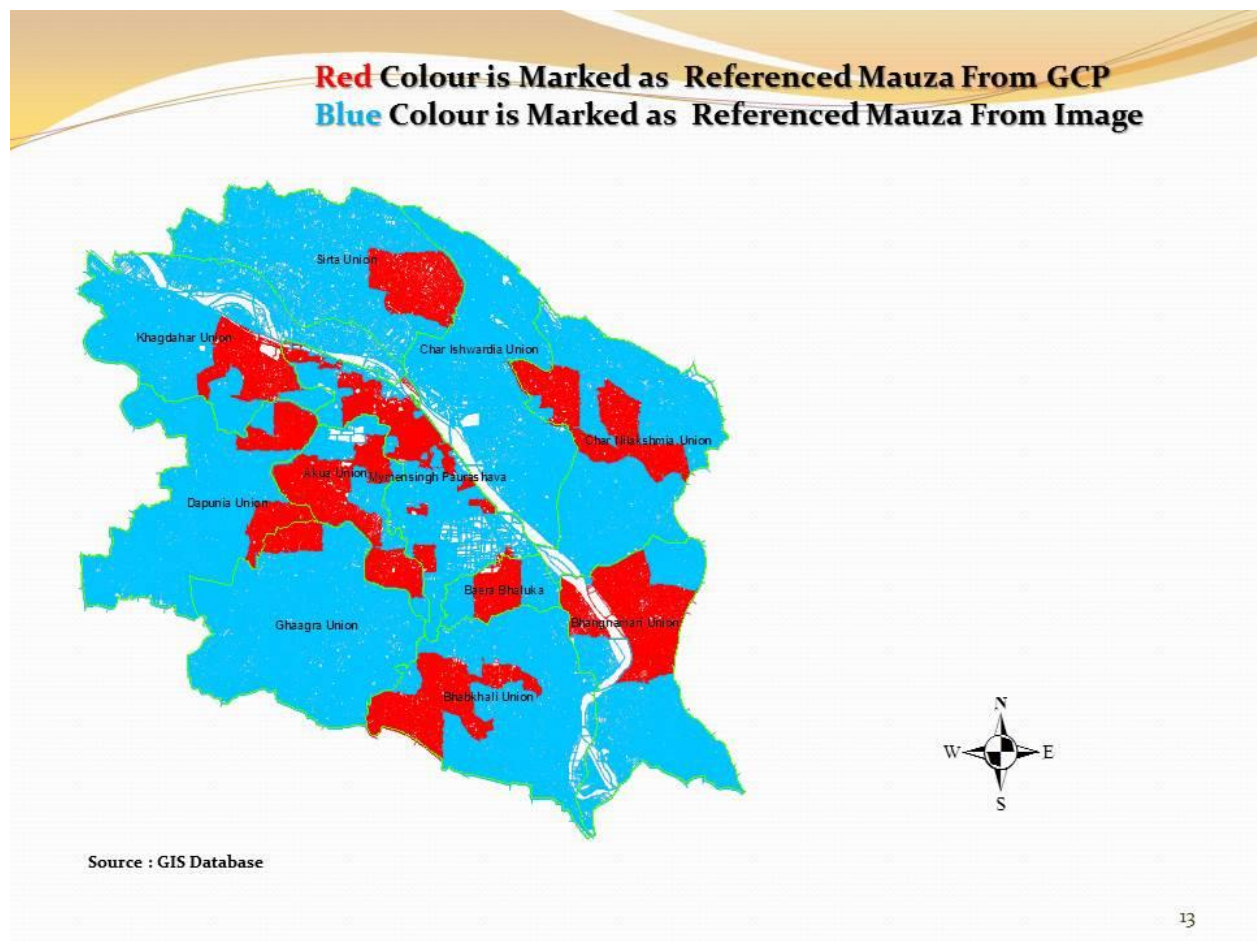
	Sadar	Paurashava			
Mymensingh	Mymensingh Sadar	Mymensingh Paurashava	Chatrapur	97	39
Mymensingh	Mymensingh Sadar	Mymensingh Paurashava	Chatrapur	97	38
Mymensingh	Mymensingh Sadar	Mymensingh Paurashava	Chatrapur	97	37
Mymensingh	Mymensingh Sadar	Mymensingh Paurashava	Chatrapur	97	36
Mymensingh	Mymensingh Sadar	Mymensingh Paurashava	Chatrapur	97	35
Mymensingh	Mymensingh Sadar	Mymensingh Paurashava	Chatrapur	97	34
Mymensingh	Mymensingh Sadar	Mymensingh Paurashava	Chatrapur	97	31
Mymensingh	Mymensingh Sadar	Mymensingh Paurashava	Chatrapur	97	31
Mymensingh	Mymensingh Sadar	Mymensingh Paurashava	Krishnapur	100	5
Mymensingh	Mymensingh Sadar	Mymensingh Paurashava	Shehra	102	13
Mymensingh	Mymensingh Sadar	Mymensingh Paurashava	Shehra	102	12
Mymensingh	Mymensingh Sadar	Mymensingh Paurashava	Shehra	102	11
Mymensingh	Mymensingh Sadar	Mymensingh Paurashava		0	11
Mymensingh	Mymensingh Sadar	Mymensingh Paurashava	Shehra	102	10
Mymensingh	Mymensingh	Mymensingh	Shehra	102	9

Final Report on *Supplying of Digitized Mouza Maps of MSDP (2011-2031) project area (Hard & Soft copy) with necessary Geo-referencing by RTK GPS based Ground Control Point (GCP)*

	Sadar	Paurashava			
Mymensingh	Mymensingh Sadar	Mymensingh Paurashava	Shehra	102	8
DISTRICT	THANA_NAME	UNION_NAME	MAUZA_NAME	JL_NO	SHEET_NO
Mymensingh	Mymensingh Sadar	Sirta	Para Lakshmir Algi	51	2
Mymensingh	Mymensingh Sadar	Sirta	Sirta	44	3
Mymensingh	Mymensingh Sadar	Sirta	Sirta	44	2
Mymensingh	Mymensingh Sadar	Sirta	Sirta	44	1
Mymensingh	Mymensingh Sadar	Sirta	Para Lakshmir Algi	51	1
Mymensingh	Mymensingh Sadar	Sirta	Kharicharchar	46	3
Mymensingh	Mymensingh Sadar	Sirta	Kharicharchar	46	2
Mymensingh	Mymensingh Sadar	Sirta	Kharicharchar	46	1
	Mymensingh Sadar	Kandarpapur	Kandarpapur	45	0
Mymensingh	Mymensingh Sadar	Sirta	Gobindapur	50	4
Mymensingh	Mymensingh Sadar	Sirta	Gobindapur	50	3
Mymensingh	Mymensingh Sadar	Sirta	Gobindapur	50	1

Final Report on *Supplying of Digitized Mouza Maps of MSDP (2011-2031) project area (Hard & Soft copy) with necessary Geo-referencing by RTK GPS based Ground Control Point (GCP)*

Mymensingh	Mymensingh Sadar	Sirta	Durgapur	49	0
Mymensingh	Mymensingh Sadar	Sirta	Char Bhabanipur	48	2
Mymensingh	Mymensingh Sadar	Sirta	Char Bhabanipur	48	1
Mymensingh	Mymensingh Sadar	Sirta	Kharicharchar	46	1



3.13 Base Map Preparation

MSDP Base Map Preparation on RS Mouza Map(GoB) has Geo-referenced By RTK GPS from Field & Satellite Image.Total Area is

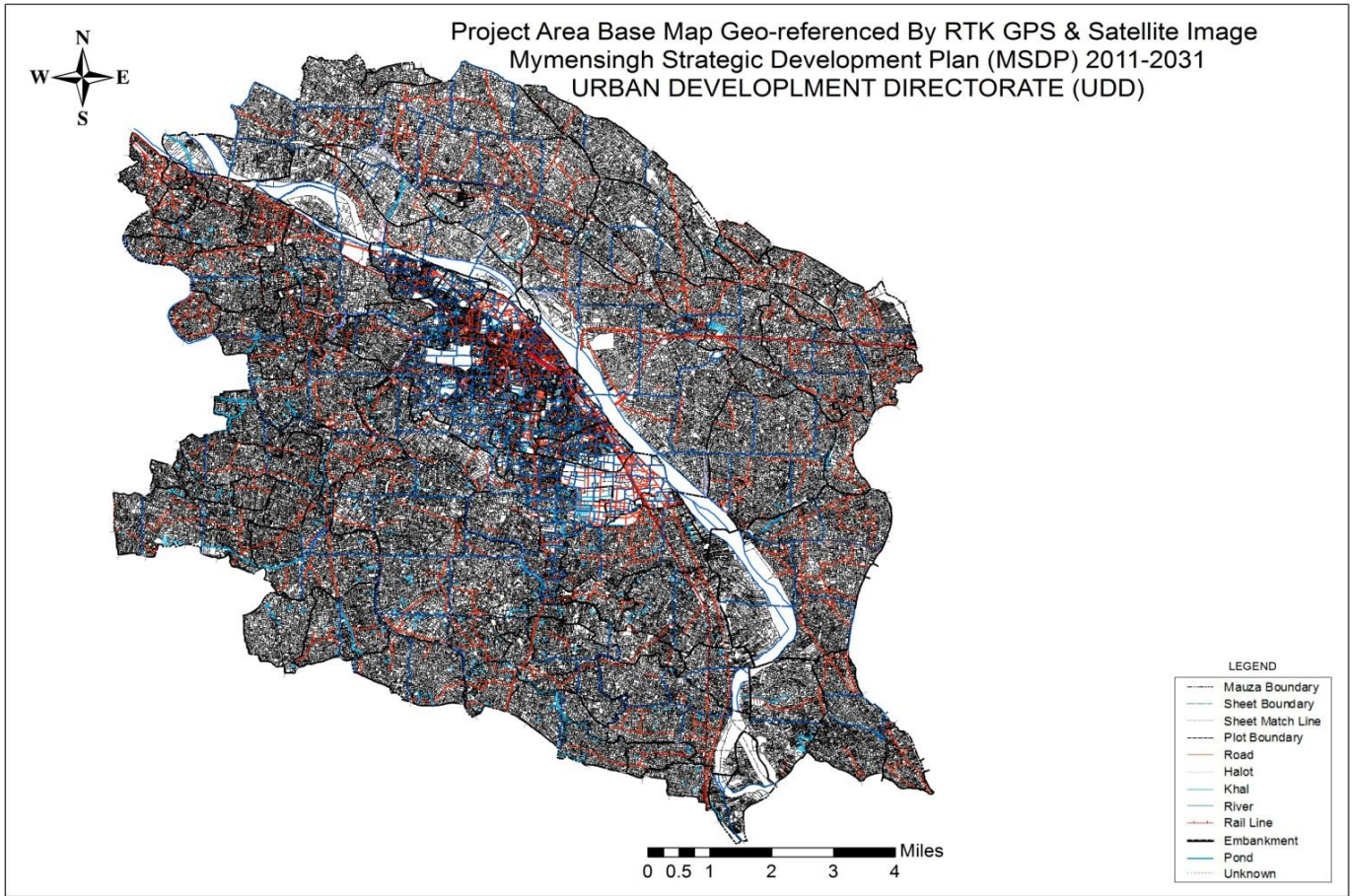


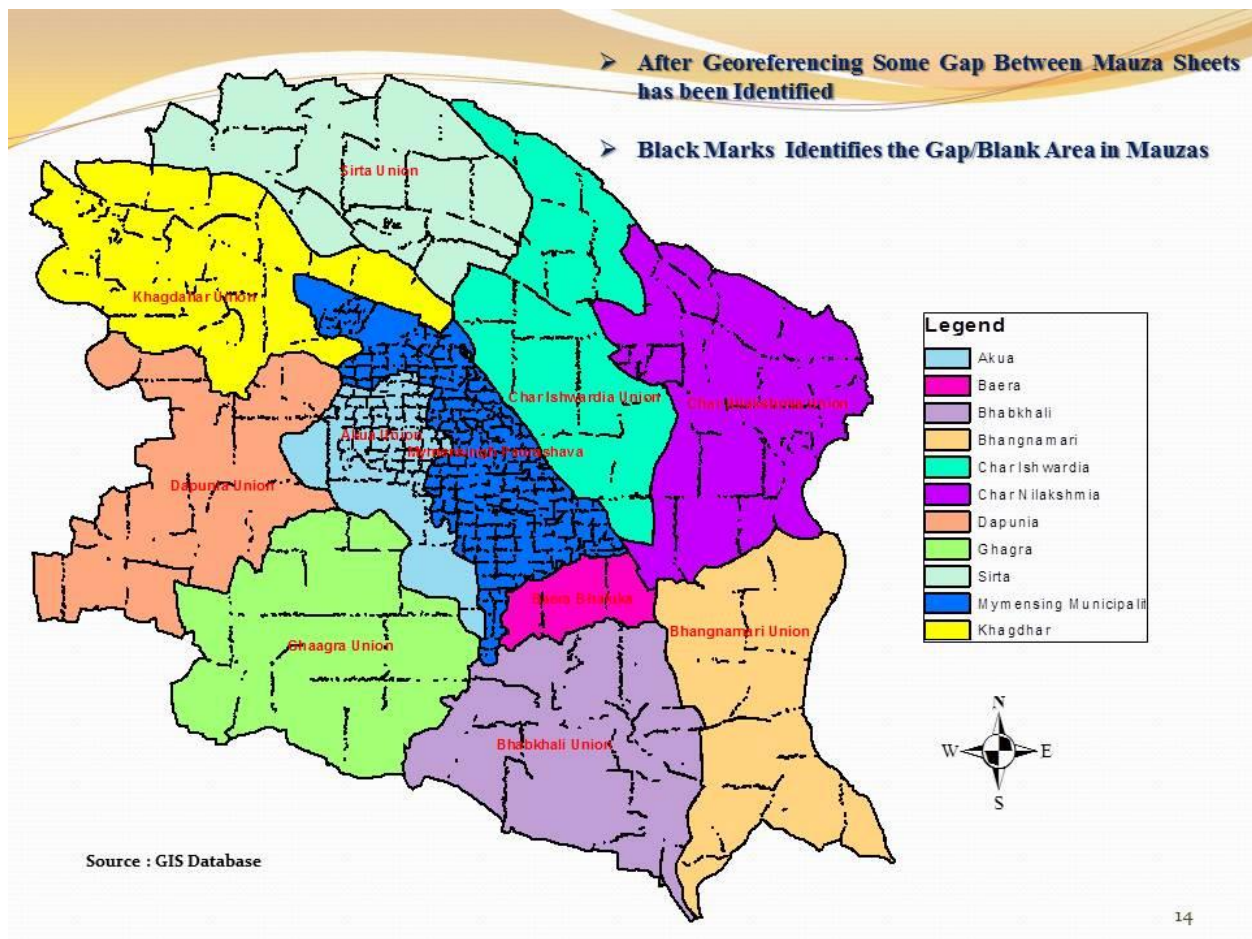
Image: Gerefrenced Mouza of Project Area

Chapter 4

Additional Issues and Recommendations

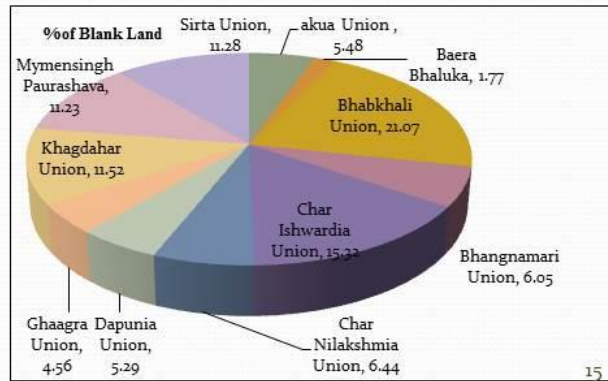
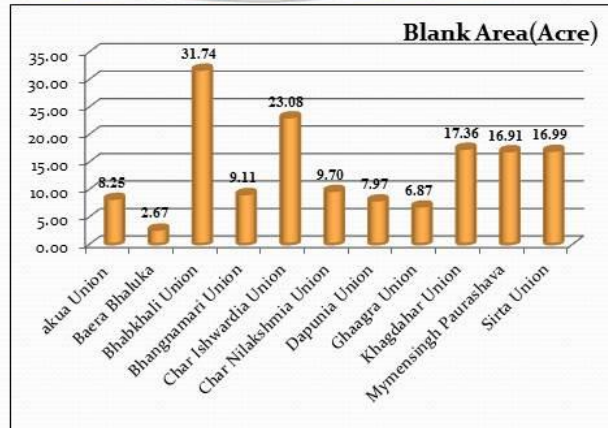
4.1 Additional Issues and Recommendations

All the plots in some mouza have not been found in field. Due to vegetation and geographical barrier could not to reach in the desired location. So All sheets could not georeferenced in field in rest of the sheets georeferenced alternative wy through 3D Sattalite image resulation .5 mete .Finally we deliverd to UDD georefrenced base Map and single sheet for archoiving future use.In the Third TMC decided to print the final sheet on tracing paper and following formate.



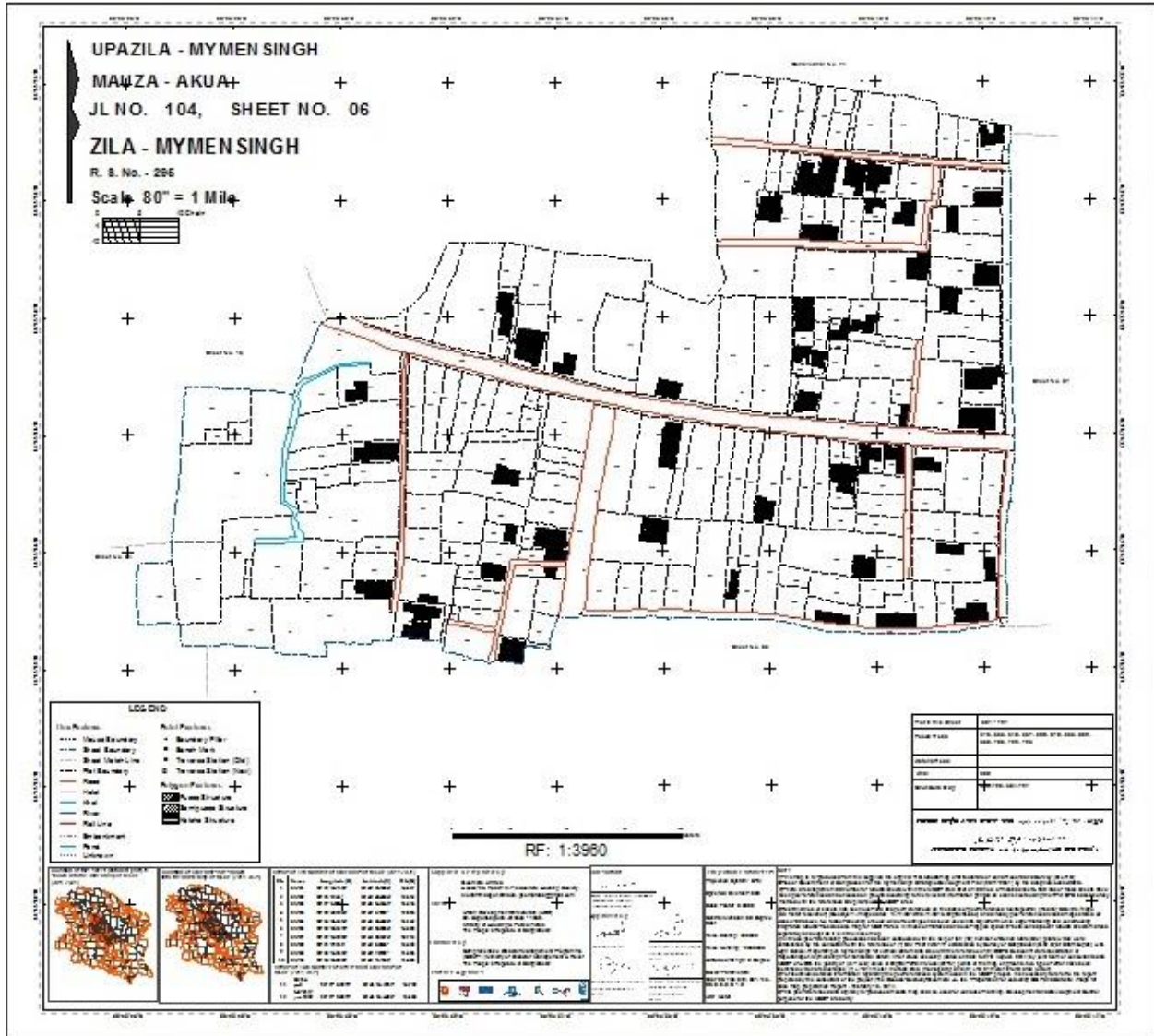
Summery of Union/Municipality wise Blank Area Between Mauza Sheets

Union	Blank Area(Acre)	Plot Area (Acre)
Akua Union	8.25	3358.19
Baera Bhaluka	2.67	1426.75
Bhabkhali Union	31.74	7794.52
Bhangnamari Union	9.11	7028.20
Char Ishwardia Union	23.08	7350.19
Char Nilakshmia Union	9.70	8480.96
Dapunia Union	7.97	7253.77
Ghaagra Union	6.87	8394.27
Khagdahar Union	17.36	7919.68
Mymensingh Paurashava	16.91	5517.37
Sirta Union	16.99	7399.56
Total	150.66	71923.45



Source : GIS Database

Final Output



Chapter 5

Conclusion

5.1 Conclusion

Supplying of Digitized Mouza Maps of (MSDP) project completion has satisfactory. The project is implementing in following the agreement. Though there is a delay of supplying mouza maps but the project is now standing a better condition. As the organization has enough skilled and sufficient manpower we had completed the within the deadline by the grace of almighty.

GCP Check from Field by RTK GPS.

Mouza has georeferenced by Collection GCP from field by RTK GPS. UDD and consultant team visited Mymensingh 24th August to 28th August for Field checking. By RTK GPS we have checked mouza sheet which is accessible and identified with Mouza sheent related to Ground.

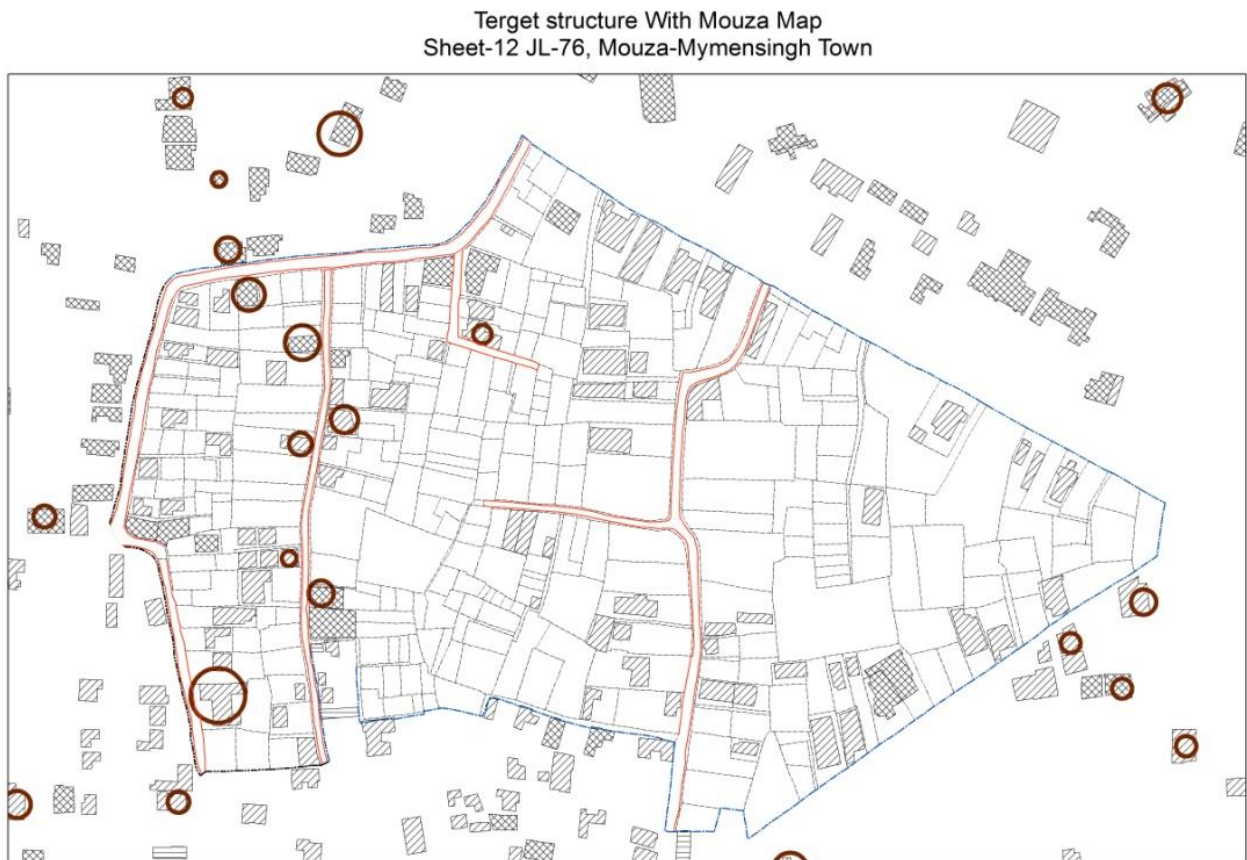


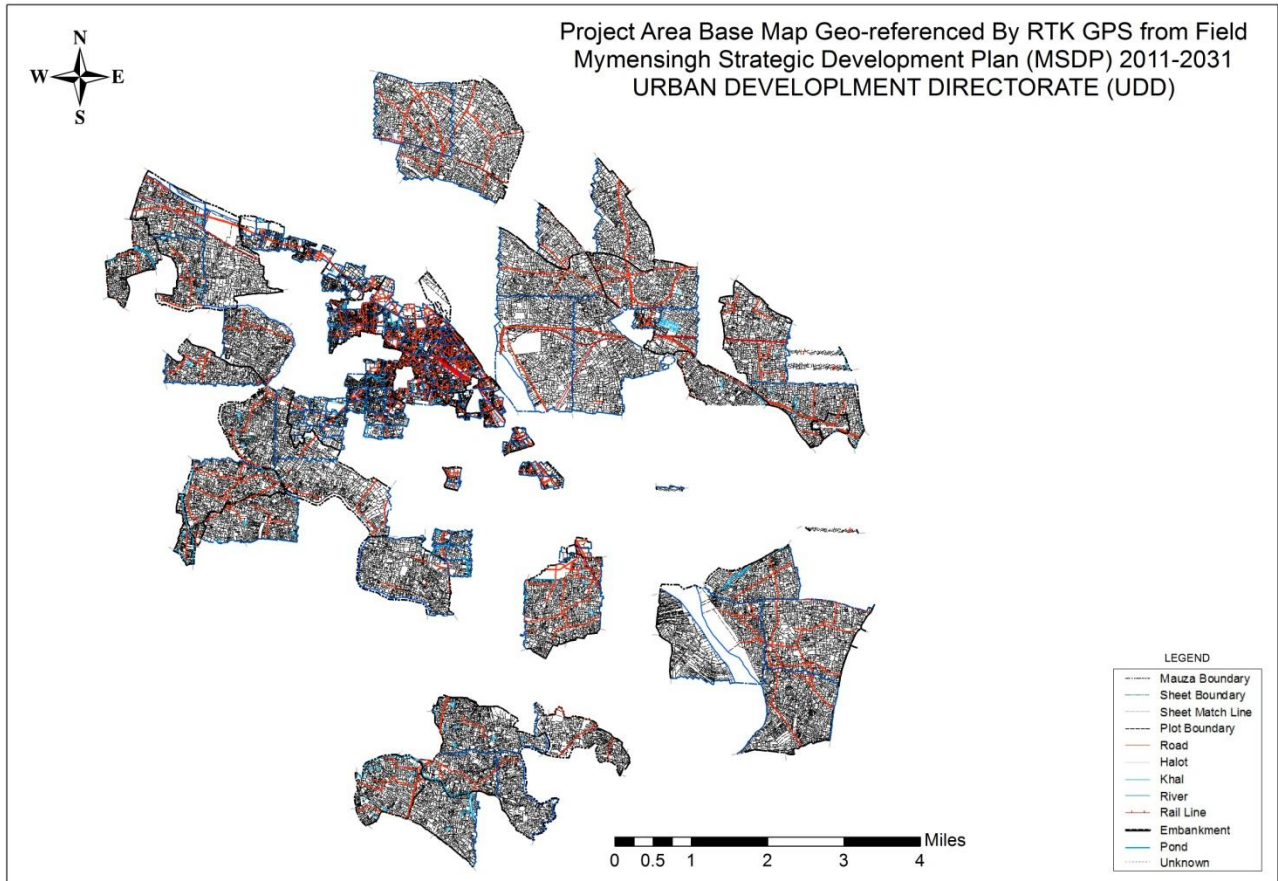
Figure: Field verification sheet



Figure: RTK GPS Survey Team

List of Mouza sheet Cheked by RTK GPS

We targeted all moza sheet checke from field but real situation following sheet could verified from field.



Project Area Base Map Geo-referenced By RTK GPS from Field

List of Map Geo-referenced checked By RTK GPS from Field

DISTRICT	THANA_NAME	UNION_NAME	MAUZA_NAME	JL_NO	SHEET_NO
Mymensingh	Mymensingh Sadar	Mymensingh Paurashava	Dholadia	71	9
Mymensingh	Mymensingh Sadar	Mymensingh Paurashava	Dholadia	71	8
Mymensingh	Mymensingh Sadar	Mymensingh Paurashava	Dholadia	71	7
Mymensingh	Mymensingh Sadar	Mymensingh Paurashava	Dholadia	71	6
Mymensingh	Mymensingh Sadar	Mymensingh Paurashava	Dholadia	71	3
Mymensingh	Mymensingh Sadar	Mymensingh Paurashava	Dholadia	71	2
Mymensingh	Mymensingh Sadar	Mymensingh Paurashava	Dholadia	71	1
Mymensingh	Mymensingh Sadar	Mymensingh Paurashava	Gologanda	72	4
Mymensingh	Mymensingh Sadar	Mymensingh Paurashava	Gologanda	72	2
Mymensingh	Mymensingh Sadar	Mymensingh Paurashava	Gohalkandi	74	2
Mymensingh	Mymensingh Sadar	Mymensingh Paurashava	Gohalkandi	74	3
Mymensingh	Mymensingh Sadar	Mymensingh Paurashava	Gohalkandi	74	4
Mymensingh	Mymensingh Sadar	Mymensingh Paurashava	Gohalkandi	74	5

Mymensingh	Mymensingh Sadar	Mymensingh Paurashava	Gohalkandi	74	12
Mymensingh	Mymensingh Sadar	Mymensingh Paurashava	Gohalkandi	74	13
Mymensingh	Mymensingh Sadar	Mymensingh Paurashava	Gohalkandi	74	14
Mymensingh	Mymensingh Sadar	Mymensingh Paurashava	Kashor	75	5
Mymensingh	Mymensingh Sadar	Mymensingh Paurashava	Kashor	75	6
Mymensingh	Mymensingh Sadar	Mymensingh Paurashava	Kashor	75	7
Mymensingh	Mymensingh Sadar	Mymensingh Paurashava	Kashor	75	11
Mymensingh	Mymensingh Sadar	Mymensingh Paurashava	Kashor	75	12
Mymensingh	Mymensingh Sadar	Mymensingh Paurashava	Kashor	75	13
Mymensingh	Mymensingh Sadar	Mymensingh Paurashava	Mymensingh Town	76	1
Mymensingh	Mymensingh Sadar	Mymensingh Paurashava	Mymensingh Town	76	2
Mymensingh	Mymensingh Sadar	Mymensingh Paurashava	Mymensingh Town	76	3
Mymensingh	Mymensingh Sadar	Mymensingh Paurashava	Mymensingh Town	76	4
Mymensingh	Mymensingh Sadar	Mymensingh Paurashava	Mymensingh Town	76	11
Mymensingh	Mymensingh Sadar	Mymensingh Paurashava	Mymensingh Town	76	12
Mymensingh	Mymensingh Sadar	Mymensingh Paurashava	Mymensingh Town	76	13
Mymensingh	Mymensingh Sadar	Mymensingh Paurashava	Mymensingh Town	76	14

Mymensingh	Mymensingh Sadar	Mymensingh Paurashava	Mymensingh Town	76	15
Mymensingh	Mymensingh Sadar	Mymensingh Paurashava	Mymensingh Town	76	16
Mymensingh	Mymensingh Sadar	Mymensingh Paurashava	Mymensingh Town	76	17
Mymensingh	Mymensingh Sadar	Mymensingh Paurashava	Mymensingh Town	76	18
Mymensingh	Mymensingh Sadar	Mymensingh Paurashava	Mymensingh Town	76	19
Mymensingh	Mymensingh Sadar	Mymensingh Paurashava	Mymensingh Town	76	20
Mymensingh	Mymensingh Sadar	Mymensingh Paurashava	Mymensingh Town	76	21
Mymensingh	Mymensingh Sadar	Mymensingh Paurashava	Mymensingh Town	76	22
Mymensingh	Mymensingh Sadar	Mymensingh Paurashava	Mymensingh Town	76	23
Mymensingh	Mymensingh Sadar	Mymensingh Paurashava	Mymensingh Town	76	24
Mymensingh	Mymensingh Sadar	Mymensingh Paurashava	Mymensingh Town	76	25
Mymensingh	Mymensingh Sadar	Mymensingh Paurashava	Mymensingh Town	76	25
Mymensingh	Mymensingh Sadar	Mymensingh Paurashava	Mymensingh Town	76	26
Mymensingh	Mymensingh Sadar	Mymensingh Paurashava	Mymensingh Town	76	27
Mymensingh	Mymensingh Sadar	Mymensingh Paurashava	Mymensingh Town	76	28
Mymensingh	Mymensingh Sadar	Mymensingh Paurashava	Mymensingh Town	76	29
Mymensingh	Mymensingh Sadar	Mymensingh Paurashava	Mymensingh Town	76	30

Mymensingh	Mymensingh Sadar	Mymensingh Paurashava	Mymensingh Town	76	31
Mymensingh	Mymensingh Sadar	Mymensingh Paurashava	Mymensingh Town	76	32
Mymensingh	Mymensingh Sadar	Mymensingh Paurashava	Mymensingh Town	76	33
Mymensingh	Mymensingh Sadar	Mymensingh Paurashava	Mymensingh Town	76	34
Mymensingh	Mymensingh Sadar	Mymensingh Paurashava	Mymensingh Town	76	35
Mymensingh	Mymensingh Sadar	Mymensingh Paurashava	Mymensingh Town	76	36
Mymensingh	Mymensingh Sadar	Mymensingh Paurashava	Mymensingh Town	76	37
Mymensingh	Mymensingh Sadar	Mymensingh Paurashava	Mymensingh Town	76	38
Mymensingh	Mymensingh Sadar	Mymensingh Paurashava	Mymensingh Town	76	39
Mymensingh	Mymensingh Sadar	Mymensingh Paurashava	Mymensingh Town	76	40
Mymensingh	Mymensingh Sadar	Mymensingh Paurashava	Mymensingh Town	76	41
Mymensingh	Mymensingh Sadar	Mymensingh Paurashava	Mymensingh Town	76	42
Mymensingh	Mymensingh Sadar	Mymensingh Paurashava	Mymensingh Town	76	43
Mymensingh	Mymensingh Sadar	Mymensingh Paurashava	Mymensingh Town	76	44
Mymensingh	Mymensingh Sadar	Mymensingh Paurashava	Mymensingh Town	76	45
Mymensingh	Mymensingh Sadar	Mymensingh Paurashava	Mymensingh Town	76	46
Mymensingh	Mymensingh Sadar	Mymensingh Paurashava	Mymensingh Town	76	47

Mymensingh	Mymensingh Sadar	Mymensingh Paurashava	Mymensingh Town	76	48
Mymensingh	Mymensingh Sadar	Mymensingh Paurashava	Mymensingh Town	76	48
Mymensingh	Mymensingh Sadar	Mymensingh Paurashava	Mymensingh Town	76	49
Mymensingh	Mymensingh Sadar	Mymensingh Paurashava	Mymensingh Town	76	49
Mymensingh	Mymensingh Sadar	Mymensingh Paurashava	Char Shehra	77	0
Mymensingh	Mymensingh Sadar	Mymensingh Paurashava	Chalkchatrapur	95	2
Mymensingh	Mymensingh Sadar	Mymensingh Paurashava	Chalkchatrapur	95	1
Mymensingh	Mymensingh Sadar	Mymensingh Paurashava	Rakta	96	5
Mymensingh	Mymensingh Sadar	Mymensingh Paurashava	Chatrapur	97	43
Mymensingh	Mymensingh Sadar	Mymensingh Paurashava	Chatrapur	97	42
Mymensingh	Mymensingh Sadar	Mymensingh Paurashava	Chatrapur	97	41
Mymensingh	Mymensingh Sadar	Mymensingh Paurashava	Chatrapur	97	33
Mymensingh	Mymensingh Sadar	Mymensingh Paurashava	Chatrapur	97	32
Mymensingh	Mymensingh Sadar	Mymensingh Paurashava	Kayetkhali	98	23
Mymensingh	Mymensingh Sadar	Mymensingh Paurashava	Kayetkhali	98	11
Mymensingh	Mymensingh Sadar	Mymensingh Paurashava	Kayetkhali	98	10
Mymensingh	Mymensingh Sadar	Mymensingh Paurashava	Kayetkhali	98	2

Mymensingh	Mymensingh Sadar	Mymensingh Paurashava	Kayetkhali	98	1
Mymensingh	Mymensingh Sadar	Mymensingh Paurashava	Balashpur	99	10
Mymensingh	Mymensingh Sadar	Mymensingh Paurashava	Balashpur	99	9
Mymensingh	Mymensingh Sadar	Mymensingh Paurashava	Balashpur	99	8
Mymensingh	Mymensingh Sadar	Mymensingh Paurashava	Balashpur	99	5
Mymensingh	Mymensingh Sadar	Mymensingh Paurashava	Balashpur	99	2
Mymensingh	Mymensingh Sadar	Mymensingh Paurashava	Krishnapur	100	1
Mymensingh	Mymensingh Sadar	Mymensingh Paurashava	Krishnapur	100	2
Mymensingh	Mymensingh Sadar	Mymensingh Paurashava	Krishnapur	100	6
Mymensingh	Mymensingh Sadar	Mymensingh Paurashava	Krishnapur	100	3
Mymensingh	Mymensingh Sadar	Mymensingh Paurashava	Vatikashor	101	1
Mymensingh	Mymensingh Sadar	Mymensingh Paurashava	Vatikashor	101	4
Mymensingh	Mymensingh Sadar	Mymensingh Paurashava	Vatikashor	101	5
Mymensingh	Mymensingh Sadar	Mymensingh Paurashava	Vatikashor	101	6
Mymensingh	Mymensingh Sadar	Mymensingh Paurashava	Shehra	102	3
Mymensingh	Mymensingh Sadar	Mymensingh Paurashava	Shehra	102	4
Mymensingh	Mymensingh Sadar	Mymensingh Paurashava	Shehra	102	5

Mymensingh	Mymensingh Sadar	Mymensingh Paurashava	Shehra	102	6
Mymensingh	Mymensingh Sadar	Mymensingh Paurashava	Shehra	102	7
Mymensingh	Mymensingh Sadar	Mymensingh Paurashava	Shehra	102	10
Mymensingh	Mymensingh Sadar	Mymensingh Paurashava	Maskanda	103	12
Mymensingh	Mymensingh Sadar	Akua	Akua	104	53
Mymensingh	Mymensingh Sadar	Akua	Akua	104	52
Mymensingh	Mymensingh Sadar	Akua	Akua	104	50
Mymensingh	Mymensingh	Akua	AKUA	104	49
Mymensingh	Mymensingh	Akua	AKUA	104	45
Mymensingh	Mymensingh	Akua	AKUA	104	44
Mymensingh	Mymensingh	Akua	Akua	104	42
Mymensingh	Mymensingh	Akua	AKUA	104	40
Mymensingh	Mymensingh	Akua	AKUA	104	41
Mymensingh	Mymensingh Sadar	Akua	Akua	104	39
Mymensingh	Mymensingh Sadar	Akua	Akua	104	38
Mymensingh	Mymensingh Sadar	Akua	Akua	104	37
Mymensingh	Mymensingh	Akua	AKUA	104	36
Mymensingh	Mymensingh	Akua	AKUA	104	35
Mymensingh	Mymensingh	Akua	AKUA	104	32
Mymensingh	Mymensingh	Akua	AKUA	104	31
Mymensingh	Mymensingh	Akua	AKUA	104	30
Mymensingh	Mymensingh	Akua	AKUA	104	29
Mymensingh	Mymensingh	Akua	AKUA	104	28
Mymensingh	Mymensingh	Akua	AKUA	104	27

Mymensingh	Mymensingh	Akua	AKUA	104	26
Mymensingh	Mymensingh	Akua	AKUA	104	25
Mymensingh	Mymensingh	Akua	AKUA	104	24
Mymensingh	Mymensingh	Akua	AKUA	104	23
Mymensingh	Mymensingh Sadar	Akua	Akua	104	12
Mymensingh	Mymensingh Sadar	Akua	Akua	104	11
Mymensingh	Mymensingh Sadar	Akua	Barera	107	5
Mymensingh	Mymensingh Sadar	Akua	Barera	107	3
Mymensingh	Mymensingh Sadar	Akua	Barera	107	2
Mymensingh	Mymensingh Sadar	Akua	Barera	107	1
Mymensingh	Mymensingh Sadar	Baera Bhaluka	Baera Bhaluka	94	2
Mymensingh	Mymensingh Sadar	Bhabkhali	Unerpar	129	1
Mymensingh	Mymensingh Sadar	Bhabkhali	Panghagra	121	0
Mymensingh	Mymensingh Sadar	Bhabkhali	Charkhai	128	3
Mymensingh	Mymensingh Sadar	Bhabkhali	Charkhai	128	2
Mymensingh	Mymensingh Sadar	Bhabkhali	Charkhai	128	1
Mymensingh	Mymensingh Sadar	Bhabkhali	Bara Baliarpar	123	2
Mymensingh	Ishwarganj	Bhangnamari	Bhangnamari	131	4
Mymensingh	Gauripur	Bhangnamari	Bhanganmari	131	6
Mymensingh	Gauripur	Bhangnamari	Bhanganmari	131	3
Mymensingh	Gauripur	Bhangnamari	Bhanganmari	131	1
Mymensingh	Mymensingh Sadar	Char Ishwardia	Lakshmipur	79	2
Mymensingh	Mymensingh Sadar	Char Ishwardia	Char Ishwardia	78	5
Mymensingh	Mymensingh Sadar	Char Ishwardia	Char Ishwardia	78	4
Mymensingh	Mymensingh Sadar	Char Ishwardia	Char Ishwardia	78	2
Mymensingh	Mymensingh Sadar	Char Ishwardia	Char Haripur	80	3

DISTRICT	THANA_NAME	UNION_NAME	MAUZA_NAME	JL_NO	SHEET_NO
Mymensingh	Mymensingh Sadar	Char Nilakshmia	Raghobpur	89	3
Mymensingh	Mymensingh Sadar	Char Nilakshmia	Rajaganj	90	0
Mymensingh	Mymensingh Sadar	Char Nilakshmia	Raghabpur	89	1
Mymensingh	Mymensingh Sadar	Char Nilakshmia	Phaliamarirchar	92	0
Mymensingh	Mymensingh Sadar	Char Nilakshmia	Char Raghurampur	81	2
Mymensingh	Mymensingh Sadar	Char Nilakshmia	Char Raghurampur	81	1
Mymensingh	Mymensingh Sadar	Char Nilakshmia	Char Raghurampur	81	5
Mymensingh	Mymensingh Sadar	Dapunia	Dapunia	106	4
Mymensingh	Mymensingh Sadar	Dapunia	Sasyamala	109	3
Mymensingh	Mymensingh Sadar	Dapunia	Dapunia	106	2
Mymensingh	Mymensingh Sadar	Dapunia	Badekalpa	105	2
Mymensingh	Mymensingh Sadar	Ghagra	Ghagra	108	1
Mymensingh	Mymensingh Sadar	Khagdahar	Rahmatpur	67	0
Mymensingh	Mymensingh Sadar	Khagdahar	Khagdahar	70	3
Mymensingh	Mymensingh Sadar	Khagdahar	Khagdahar	70	2
Mymensingh	Mymensingh Sadar	Khagdahar	Khagdahar	70	1
Mymensingh	Mymensingh Sadar	Sirta	Gobindapur	50	2
Mymensingh	Mymensingh Sadar	Sirta	Char Bhabanipur	48	4
Mymensingh	Mymensingh Sadar	Sirta	Char Bhabanipur	48	3

Findings: we found all sheet are referenced regarding field actual position .some error occurred on Mouza Map's Building structure and ground original position of structure. About 1.5 to 3 meter .because Mouza Map structure were not drawn actual position and scale.

Decision: Over all Mouza Map position is found correct in field.